

THIS DRAWING AND SPECIFICATIONS, HEREIN, ARE THE PROPERTY OF INVENTEC CORPORATION AND SHALL NOT BE REPRODUCED, COPIED, OR USED IN WHOLE OR IN PART AS THE BASIS FOR THE MANUFACTURE OR SALE OF ITEMS WITHOUT WRITTEN PERMISSION, INVENTEC CORPORATION, 2012 ALL RIGHT RESERVED.

HSF Property: ROHS or Halogen-Free

1310A2548301 (SAMSUNG) R5061 CHANGE TO 6013A0107901 (45.3K OHM)
1310A2548302 (MICRON) R5061 CHANGE TO 6013A0017501 (30.1K OHM)

15CR-UMA-PV-1206

2012.1206

Chief River						
UMA	DIS					
PGA 35W(dual)-HM77						
NA	N14P-GV2 23*23				N14P-GT 29*29	
NA	900MHz 256Mx16 DDR3 4pcs (2G)		900MHz 256Mx16 DDR3 8pcs (4G)		1GHz 128Mx16 GDDR5 8pcs (2G)	
	Samsung K4W4G1646B-HC11	Micron MT41K256M16HA-107G:E	Samsung K4W4G1646B-HC11	Micron MT41K256M16HA-107G:E	Hynix H5GQ2H24AFR-T2C	Samsung K4G20325FD-FC04
6050A2548201	6050A2548301				6050A2548401	
PCB-1(6L)	PCB-2 (8L)				PCB-3 (8L)	
1310A2548201	1310A2548301	1310A2548302	1310A2548303	1310A2548304	1310A2548401	1310A2548402

USB BOARD (6L) 1310A2548501 6050A2548501
POWER BOARD (6L) 1310A2548701 6050A2548701
POWER BOARD (8L) 1310A2548801 6050A2548801
USB BOARD (8L) 1310A2548601 6050A2548601

Location	Part number	Factory	Manufacturer Part No	Marking
D300	1st : 6011A0026801	DIODES	D-BAT54-7	KL1
	2nd : 60110GA0367T	NXP	BAT54	L4
Q300	1st : 6015B0110701	TOSHIBA	SSM3K7002BFU	NM
	2nd : 6015B0142901	DIODES	DMN65D8LV-7	MM3
Q301	1st : 6015B0142901	DIODES	DMN65D8LV-7	MM3
U301	1st : 6019B0932401	MXIC	MX25L512EM-10G	
512KB	2nd : 6019B0816001	ATMEL	AT25FS128-SSH-T	
U301	1st : 6019B1016101	WINBOND	W25Q32FVSSIG	
4MB	2nd : 6019B0794701	MXIC	MX25L3206EM2I-12G	
U301	1st : 6019B095901	WINBOND	W25Q64FVSSIG	
8MB	2nd : 6019B0813101	MXIC	MX25L6406EM2I-12G	

2012/5/02	DB	X01
21-OCT-2002		
DATE	CHANGE NO.	REV

DRAWER	EE	DATE	POWER	DATE	INVENTEC			
DESIGN	Abel				MODEL, PROJECT, FUNCTION			
CHECK	Alan				Main Board			
RESPONSIBLE								
FILE NAME					SIZE	CODE	DOC NUMBER	REV
FILE NAME					C	CS	1310A2548201	A01
FILE NAME								
FILE NAME								

Index

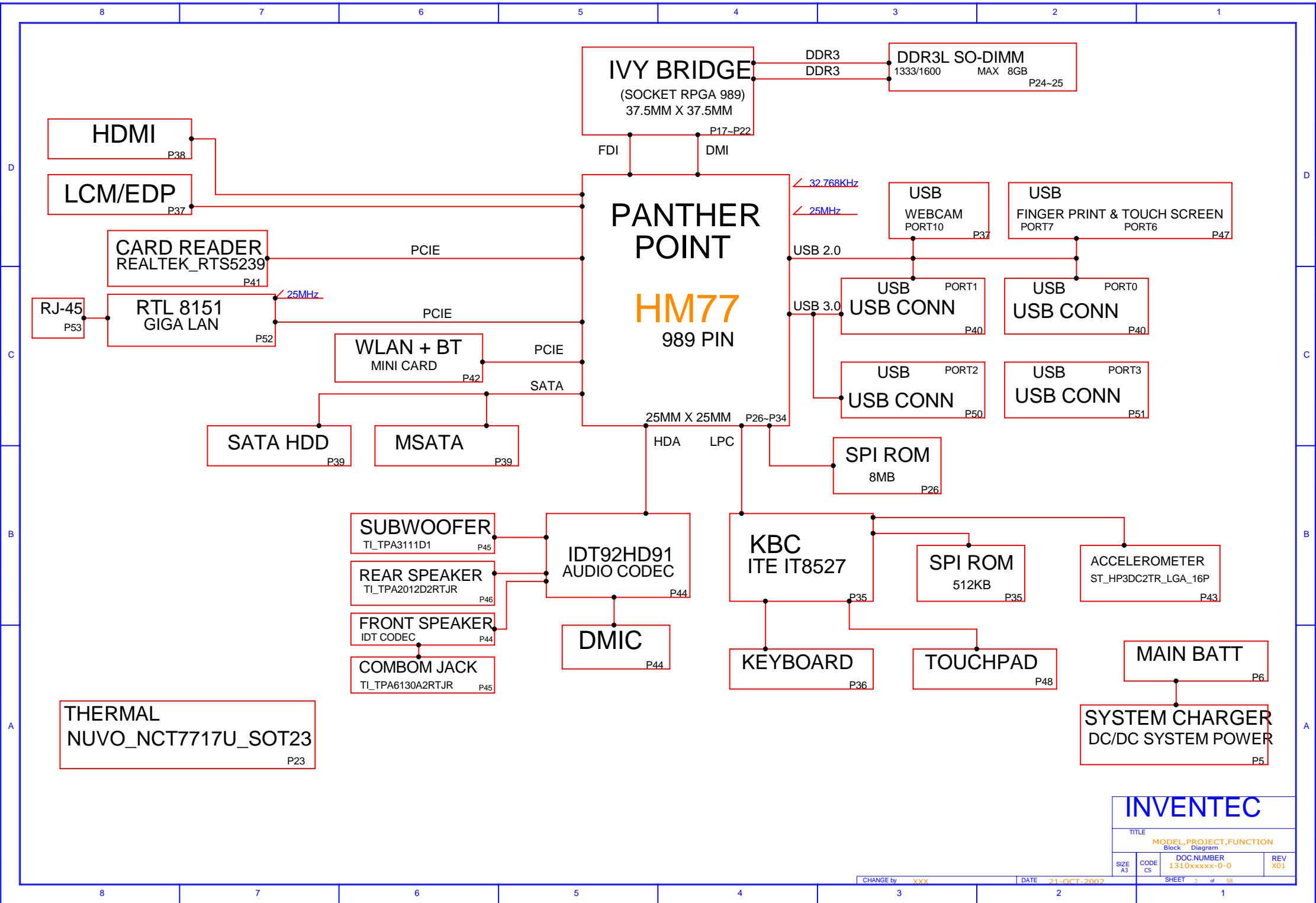
1 COVER	26 PCH1 RTC,HDA,SPI,LPC.SATA	51 AUB_USB30-2
2 INDEX	27 PCH2 CLK,SMBUS,PCI-E	52 LAN RLT8161GSH-CG
3 BLOCK DIAGRAM	28 PCH3 DMI,FDI,SPM	53 TRANSFORMER & RJ45
4 POWER PROCEDURE	29 PCH4 LVDS,CRT	54 JACK
5 SELECTOR	30 PCH5 PCI,USB	55 DAUGHTER BOARD
6 CHARGER	31 PCH6 GPIO,CPU/MISC	56 ESD BOARD
7 P3V3_P5V0	32 PCH7 POWER	57 POWER SEQUENCE
8 PVDDQ	33 PCH8 POWER	58 POWER SEQUENCE2
9 P1V0S_VCCP	34 PCH9 GND	
10 P1V8S	35 EC IT8527	
11 P1V5S	36 KB CONN & LED	
12 PVSA	37 40 PIN LCM	
13 PVCORE1	38 HDMI	
14 PVCORE2	39 SATA HDD & MSATA	
15 POWER TO EE PORT & EMI PART	40 USB3.0 CONN	
16 P5V0S & P3V3S	41 CARD READER	
17 CPU1	42 WLAN	
18 CPU2_EDP & FDI & DMI & PCIE_GPU	43 G-SENSOR	
19 CPU3	44 AUDIO-1	
20 CPU4	45 AUDIO-2	
21 CPU5	46 AUDIO-3	
22 CPU6	47 FINGER PRINT	
23 THERMAL & FAN	48 MB TO DB CONN & SCREW	
24 DDR3-1	49 AUB_BLANK	
25 DDR3-2	50 AUB_USB30-1	

INVENTECTITLE
MODEL,PROJECT,FUNCTION
INDEX

SIZE A3	CODE CS	DOC.NUMBER 1310xxxxx-0-0	REV X01
------------	------------	-----------------------------	------------

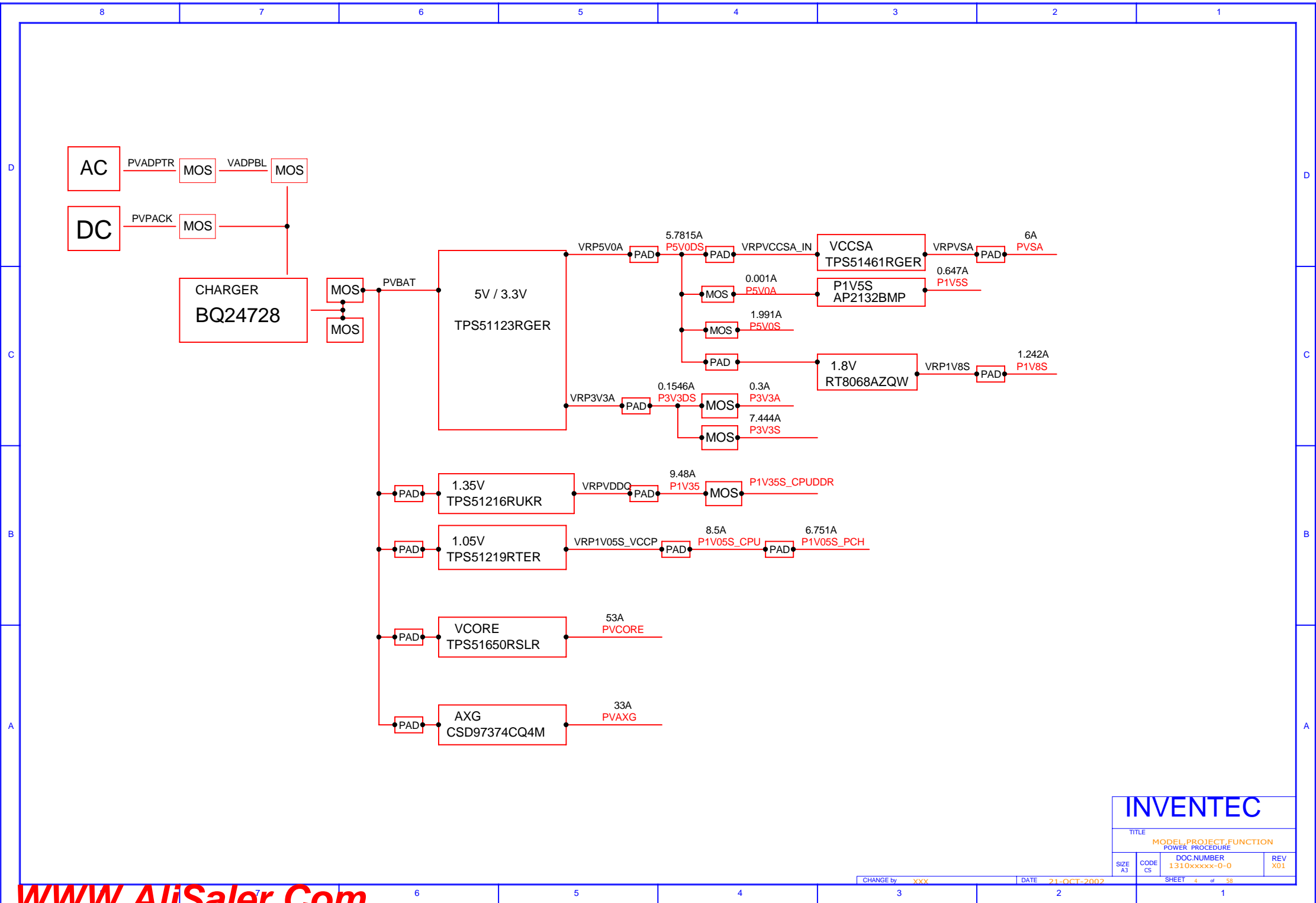
SHEET 2 of 58

CHANGE by XXX DATE 21-OCT-2002



INVENTEC

TITLE			
MODEL, PROJECT, FUNCTION			
Block Diagram			
SIZE	CODE	DOC NUMBER	REV
A3	CS	1310xxxx-0-0	X01



INVENTEC

TITLE			
MODEL PROJECT FUNCTION POWER PROCEDURE			
SIZE A3	CODE CS	DOC NUMBER 1310xxxxx-0-0	REV X01
SHEET 4 of 58			

CHANGE by XXXX DATE 21-OCT-2002



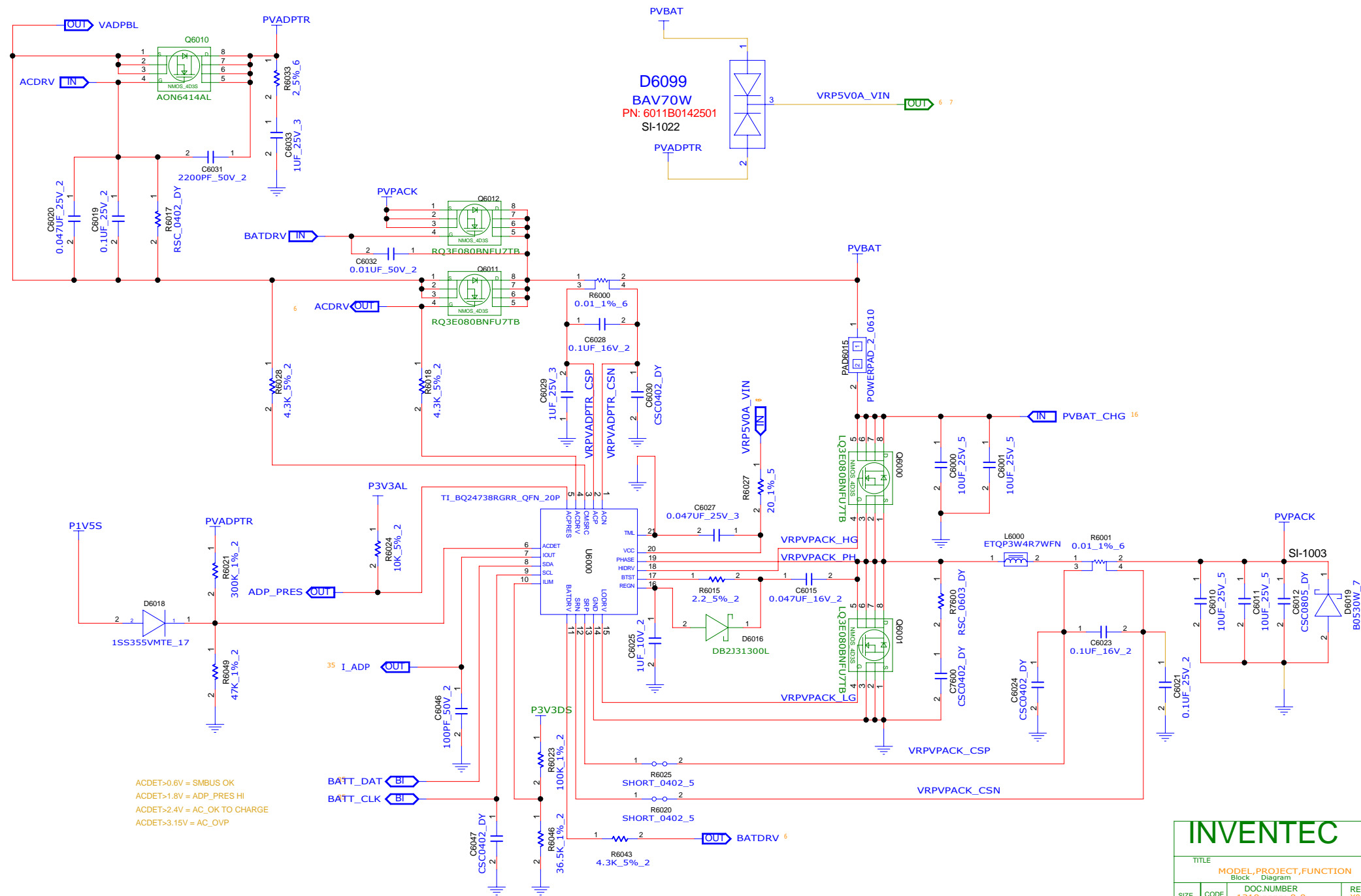
SHEET 5 of 58

D

C

B

A



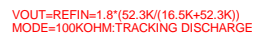
D

C

B

A





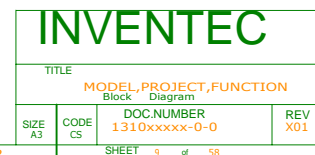
VTT
ON
(High-Z)
Discharge

VTT
ON
(High-Z)
Discharge

TITLE	MODEL,PROJECT,FUNCTION
	Block Diagram

SIZE A3	CODE CS	DOC.NUMBER 1310xxxxx-0-0	
		SHEET 0 of 50	

SHEET 8 of 58

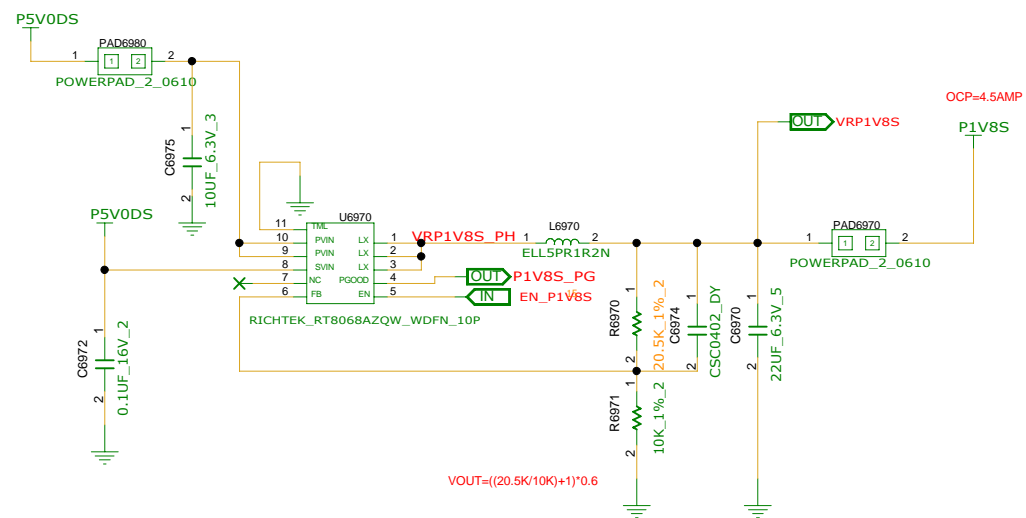


D

C

B

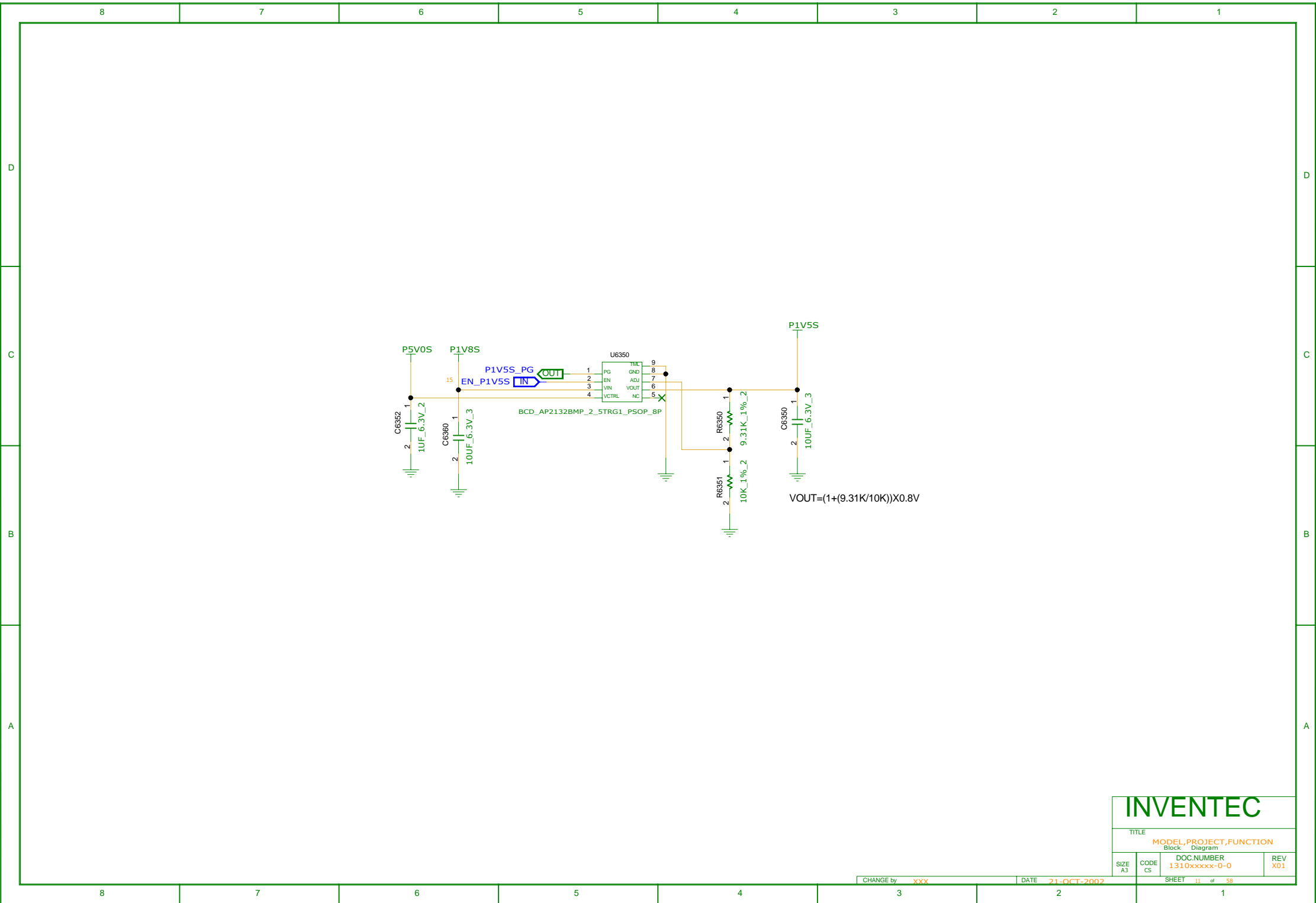
A

**INVENTEC**TITLE
MODEL, PROJECT, FUNCTION
Block Diagram

SIZE A3 CODE CS DOC NUMBER 1310xxxxx-0-0 REV X01

SHEET 10 of 58

CHANGE by XXX DATE 21-OCT-2002



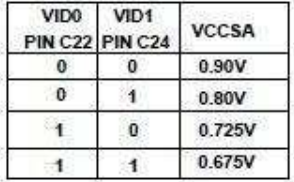
INVENTEC

TITLE

MODEL,PROJECT,FUNCTION

DOC NUMBER

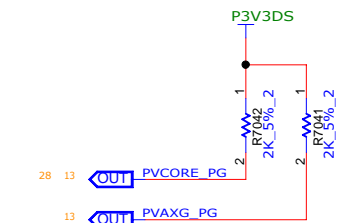
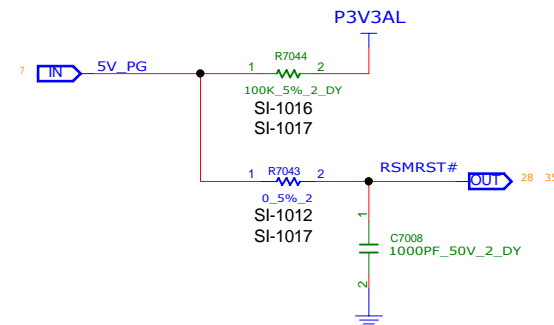
REV



SIZE A3	CODE CS	DOC. NUMBER 1310xxxxx-0-0	REV X01
SHEET 12 of 58			







INVENTEC

TITLE	MODEL,PROJECT,FUNCTION
-------	------------------------

SIZE	CODE	DOC.NUMBER	REV
01	01	01	01

SHEET A3	CS	1310XXXXX-0-0	
		SHEET 15 of 58	

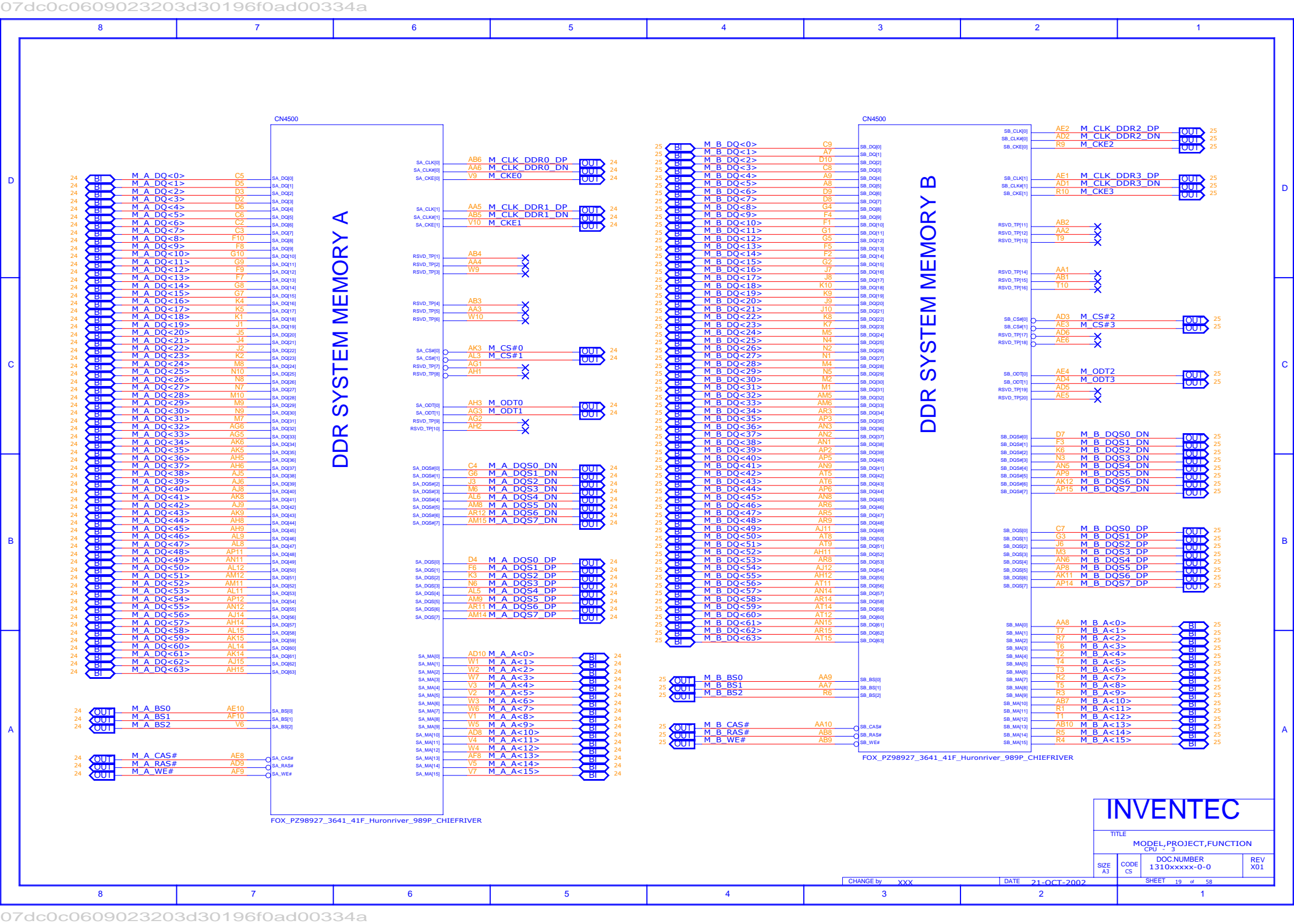
CHANGE by	XXX	DATE	21-OCT-2002
-----------	-----	------	-------------

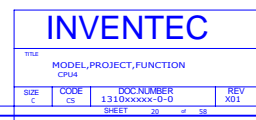
SHEET 15 of 58

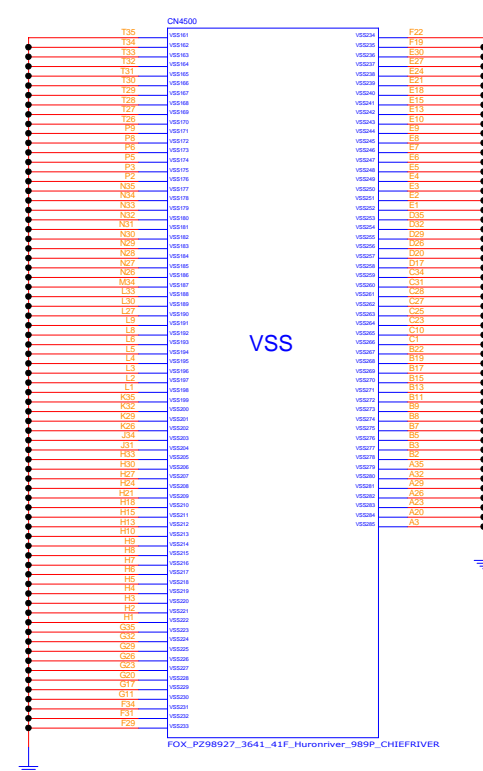
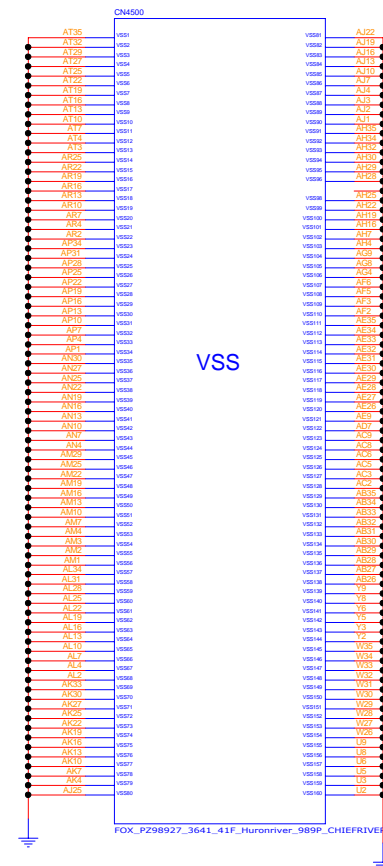
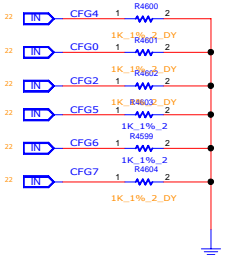


SHEET 18 of 58



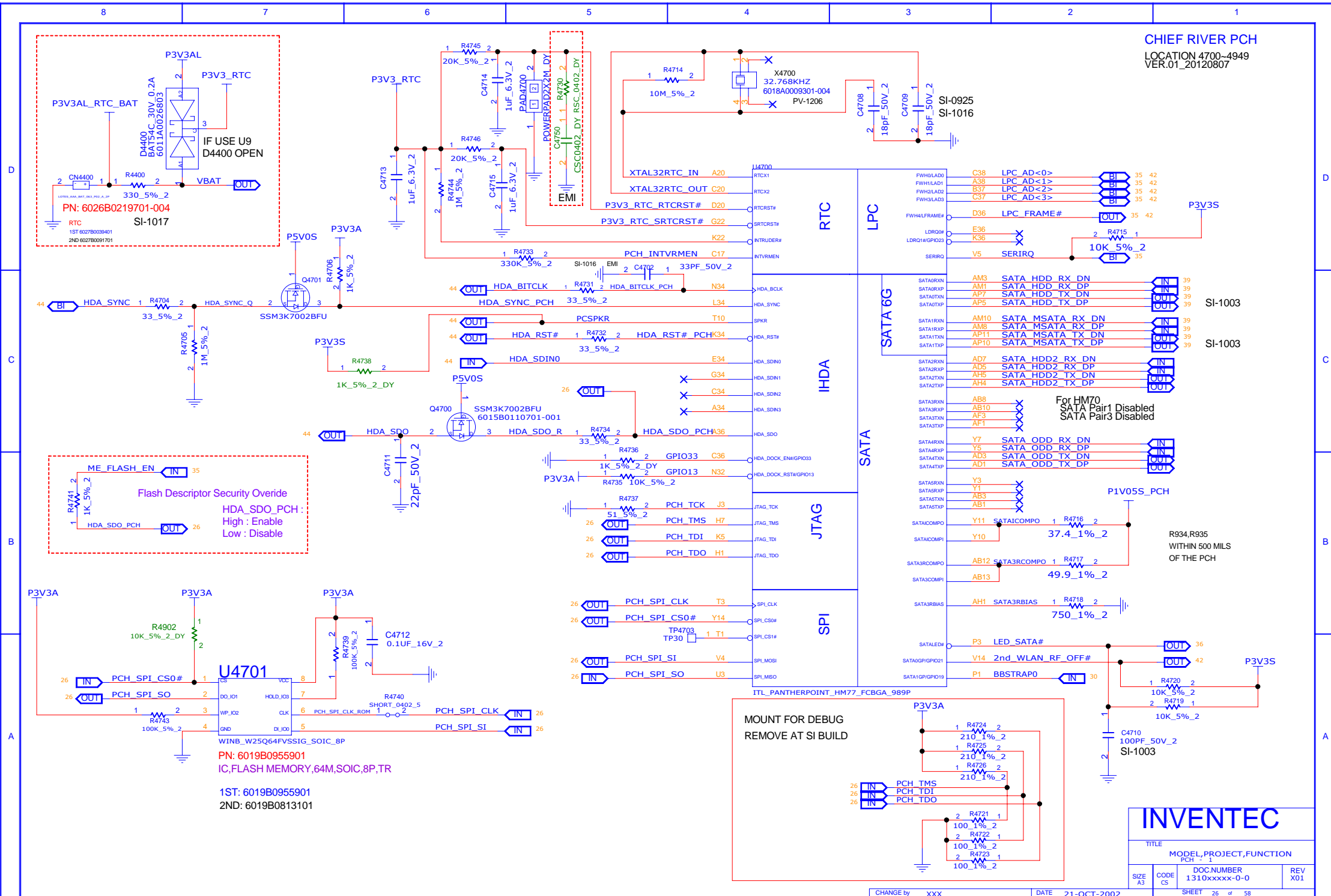






SHEET 24 of 58

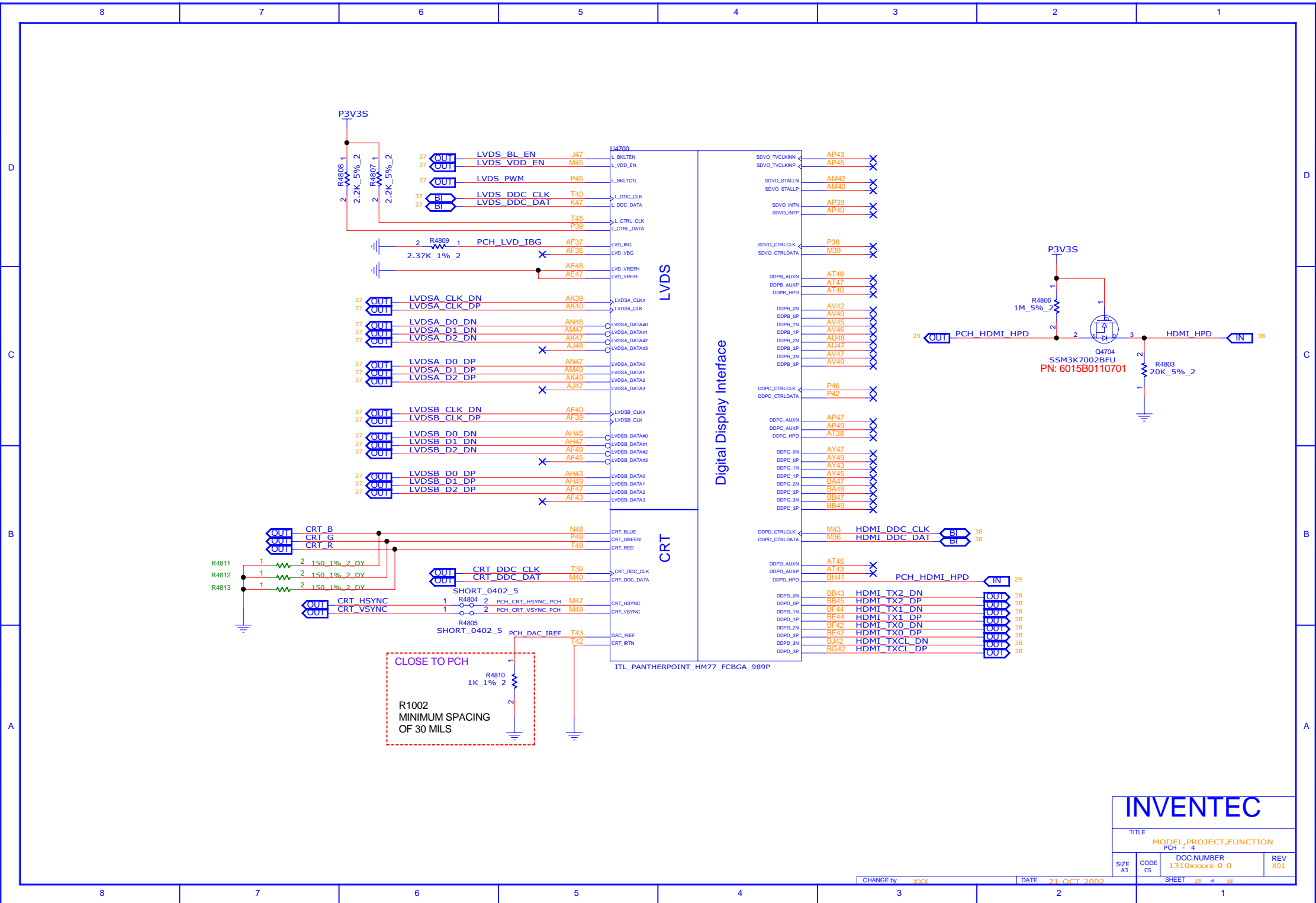
SHEET 25 of 58







SHEET 28 of 58



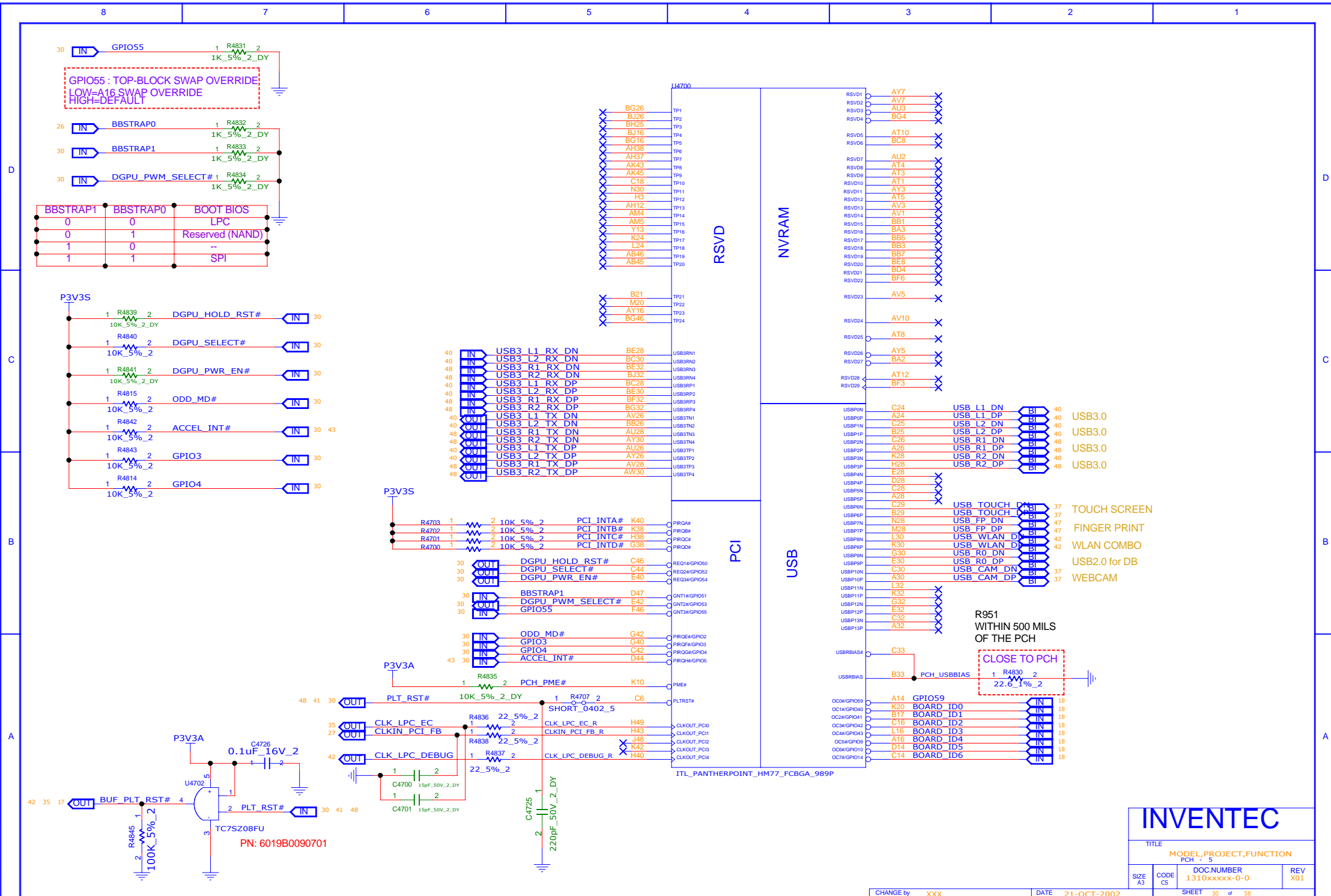
INVENTEC

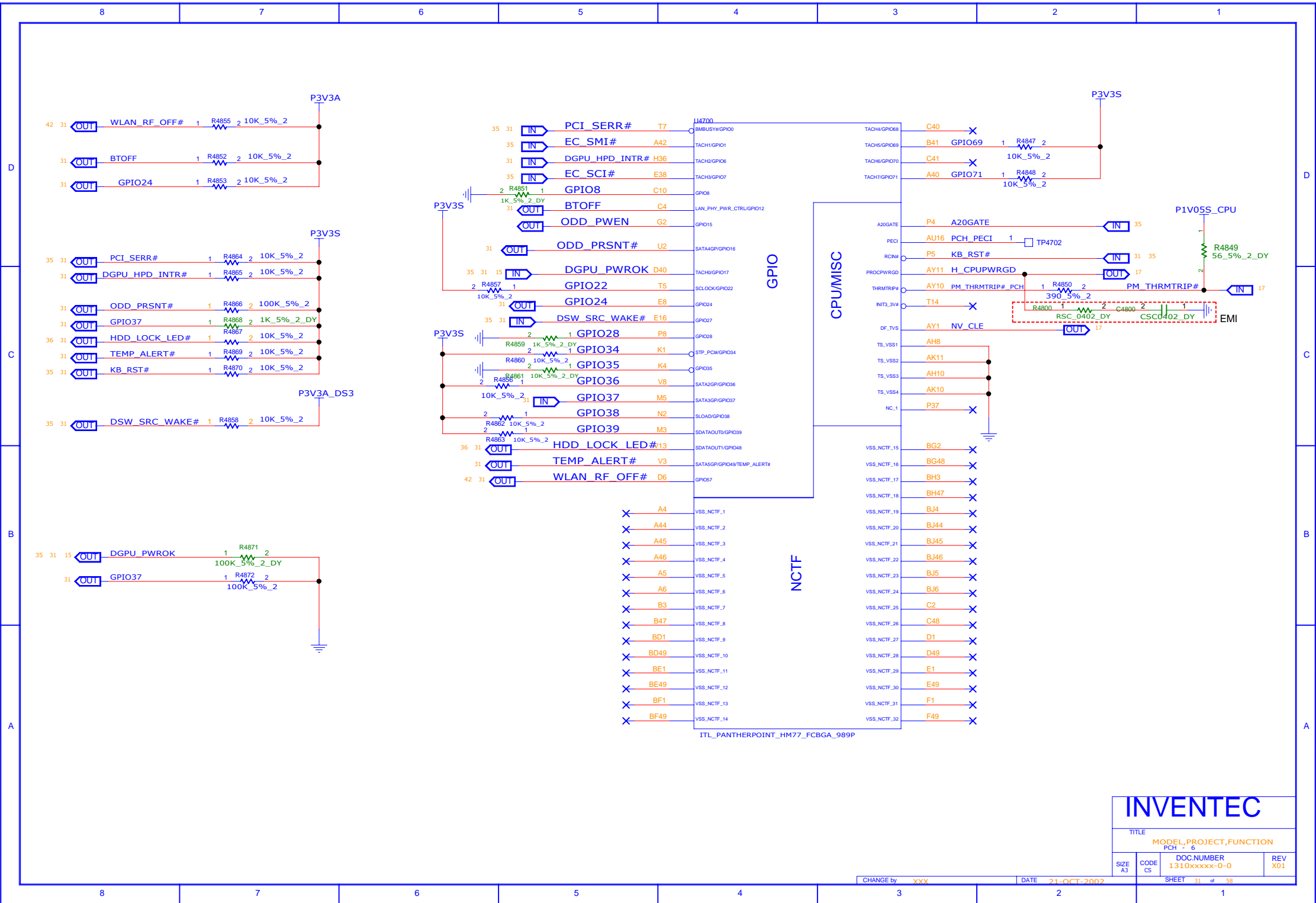
TITLE
MODEL,PROJECT,FUNCTION
PCH - 4

SIZE A3 CODE CS DOC NUMBER 1310xxxx-0-0 REV X01

CHANGE by XXX DATE 21-OCT-2002

SHEET 29 of 58





INVENTEC

TITLE
MODEL,PROJECT,FUNCTION
PCH - 6

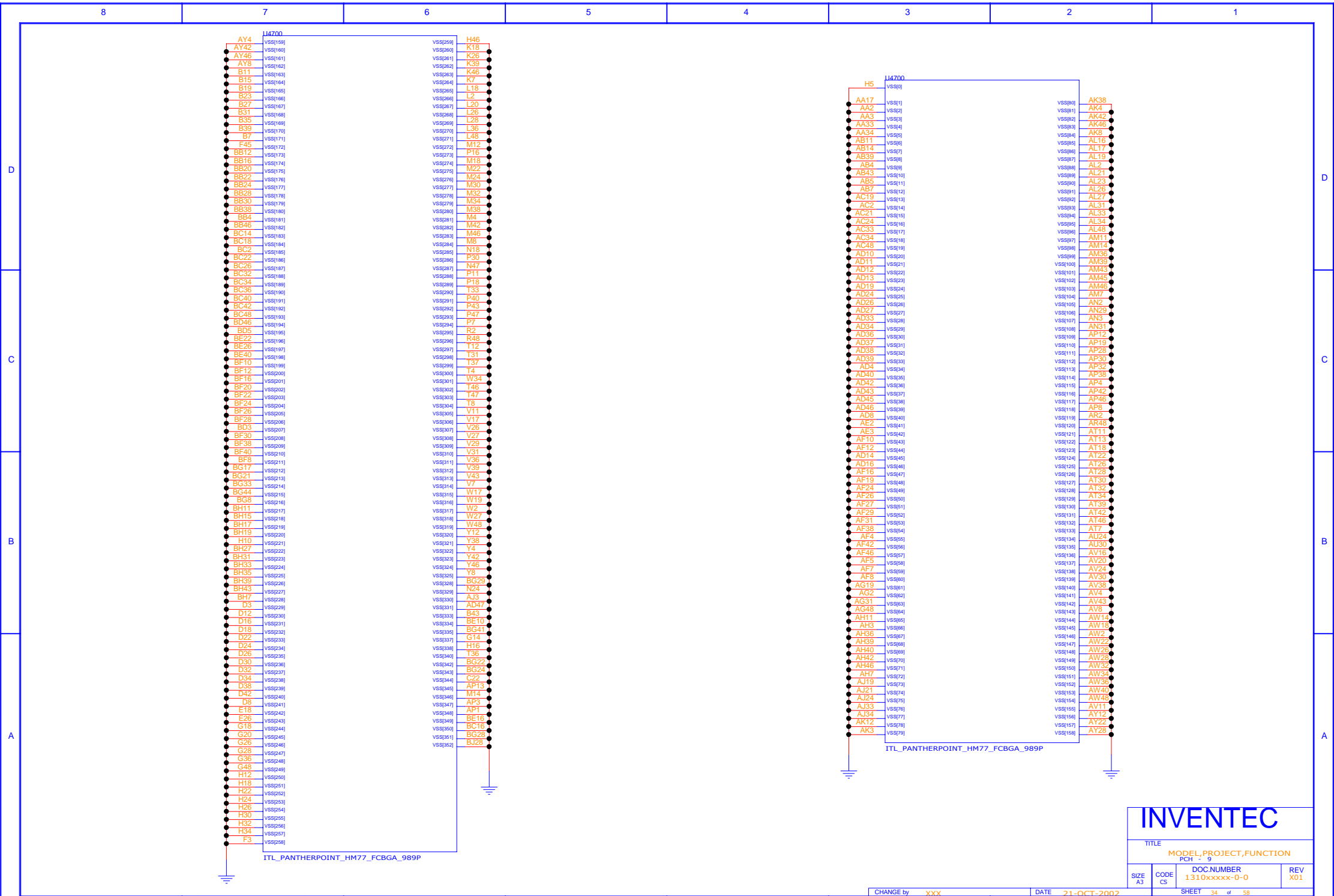
SIZE CODE DOC NUMBER REV
A3 CS 1310xxxxx-0-0 X01

CHANGE by XXX DATE 21-OCT-2002

SHEET 31 of 58







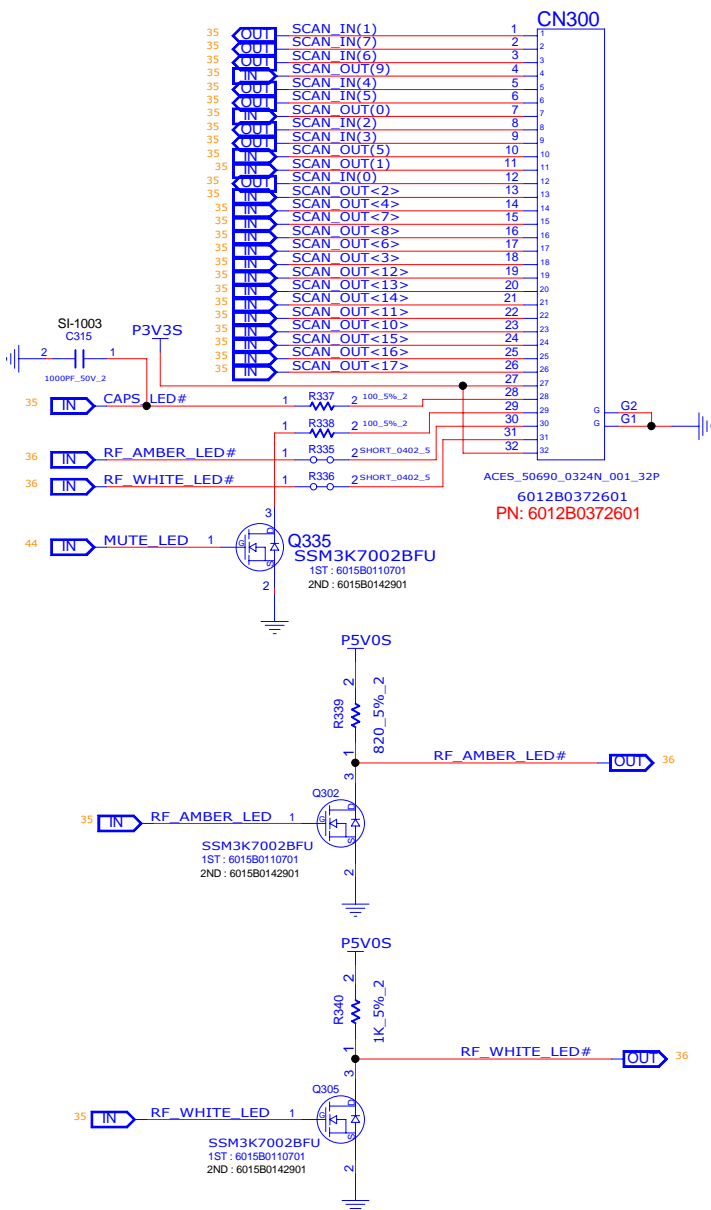
INVENTEC

TITLE
MODEL,PROJECT,FUNCTION
PCH 9

SIZE CODE DOC NUMBER REV
A3 CS 1310xxxxx-0-0 X01

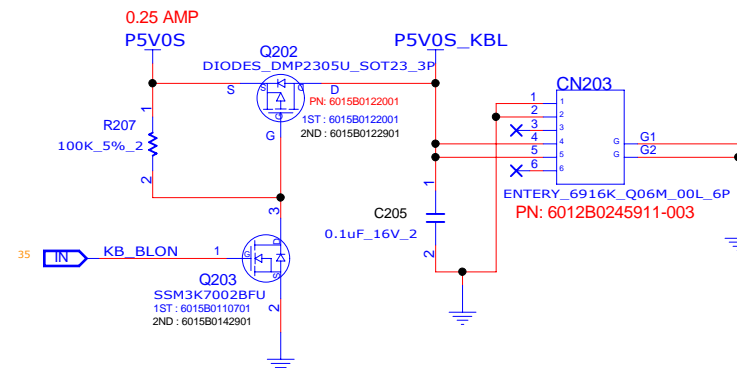
CHANGE by xxx DATE 21-OCT-2002 SHEET 34 of 58

KEYBOARD CONN(32 PIN)



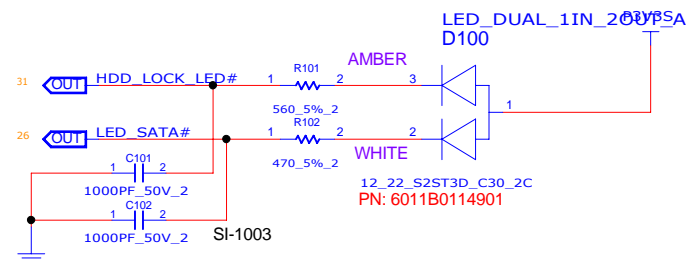
CONNECTOR KEY BOARD 200~299

KEYBOARD BACKLIGHT

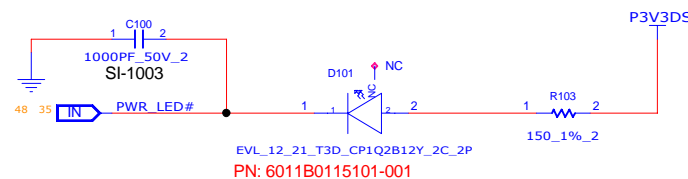


LED 100~199

HDD LED



POWER LED



INVENTEC

TITLE			
MODEL PROJECT,FUNCTION			
KB_CONN & LED			
SIZE	CODE	DOC NUMBER	REV
A3	CS	1310xxxxx-0-0	X01

CHANGE by XXX DATE 21-OCT-2002

SHEET 36 of 58

LOCATION 3000~3049
VER.01_20120822



The schematic diagram illustrates the power and signal connections for the Raspberry Pi 4B. It shows the following components and their connections:

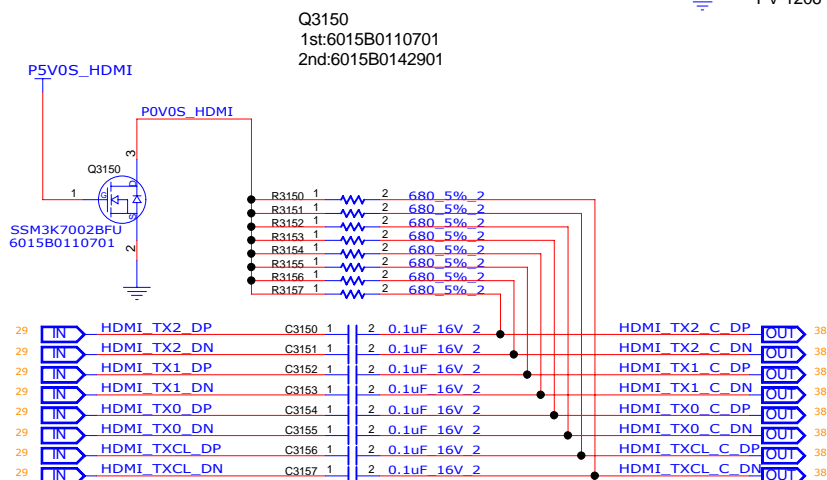
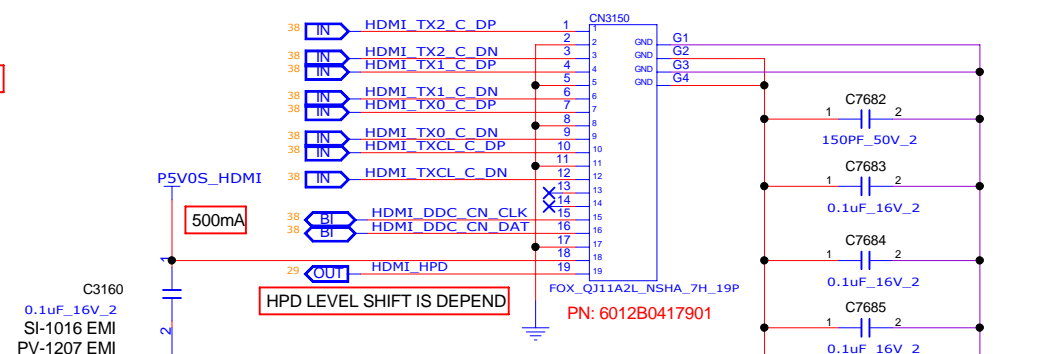
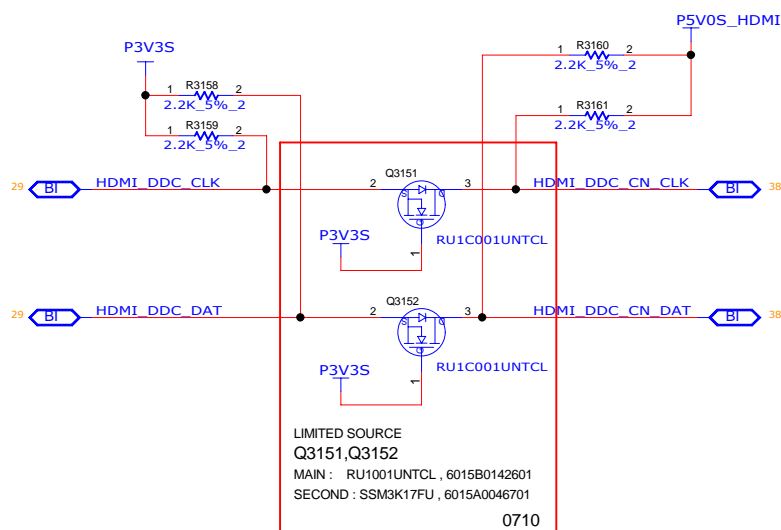
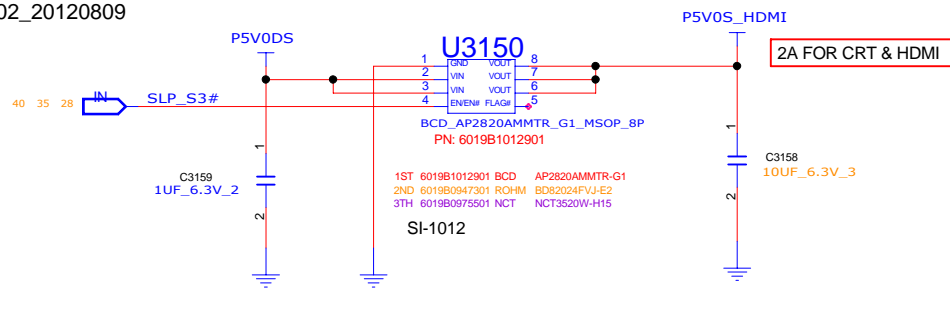
- Power Input:** P3V3S is connected to the 5V pin of the USB-C connector (C3018).
- Capacitors:** C3018 (4.7uF_6.3V_3) and C3019 (4.7uF_6.3V_3) are connected to the 5V pin. C3013 (4.7uF_6.3V_3) is connected to the P3V3S pin. C3016 (0.1uF_16V_2) is connected to the P3V3S pin. C3017 (10uF_6.3V_3) is connected to the P3V3S pin.
- Diodes:** D3003, D3004, D3005, D3006, D3007, and D3008 are Schottky diodes connected to the P3V3S pin. D3003 and D3004 are connected to the P3V3S pin. D3005 and D3006 are connected to the P3V3S pin. D3007 and D3008 are connected to the P3V3S pin.
- Connectors:** C3018 (USB-C connector), C3019 (USB-C connector), C3013 (USB-C connector), C3016 (USB-C connector), C3017 (USB-C connector), C3001 (USB-C connector), C3002 (USB-C connector), C3003 (USB-C connector), C3004 (USB-C connector), C3005 (USB-C connector), C3006 (USB-C connector), C3007 (USB-C connector), C3008 (USB-C connector).
- Other Components:** R3000 (0.5%_2_DY), R3001 (0.5%_2_DY), R3002 (0.5%_2_DY), R3003 (0.5%_2_DY), R3004 (0.5%_2_DY), R3005 (0.5%_2_DY), R3006 (0.5%_2_DY), R3007 (0.5%_2_DY), R3008 (0.5%_2_DY), R3009 (0.5%_2_DY), R3010 (0.5%_2_DY), R3011 (0.5%_2_DY), R3012 (0.5%_2_DY), R3013 (0.5%_2_DY), R3014 (0.5%_2_DY), R3015 (0.5%_2_DY), R3016 (0.5%_2_DY), R3017 (0.5%_2_DY), R3018 (0.5%_2_DY), R3019 (0.5%_2_DY), R3020 (0.5%_2_DY), R3021 (0.5%_2_DY), R3022 (0.5%_2_DY), R3023 (0.5%_2_DY), R3024 (0.5%_2_DY), R3025 (0.5%_2_DY), R3026 (0.5%_2_DY), R3027 (0.5%_2_DY), R3028 (0.5%_2_DY), R3029 (0.5%_2_DY), R3030 (0.5%_2_DY), R3031 (0.5%_2_DY), R3032 (0.5%_2_DY), R3033 (0.5%_2_DY), R3034 (0.5%_2_DY), R3035 (0.5%_2_DY), R3036 (0.5%_2_DY), R3037 (0.5%_2_DY), R3038 (0.5%_2_DY), R3039 (0.5%_2_DY), R3040 (0.5%_2_DY), R3041 (0.5%_2_DY), R3042 (0.5%_2_DY), R3043 (0.5%_2_DY), R3044 (0.5%_2_DY), R3045 (0.5%_2_DY), R3046 (0.5%_2_DY), R3047 (0.5%_2_DY), R3048 (0.5%_2_DY), R3049 (0.5%_2_DY), R3050 (0.5%_2_DY), R3051 (0.5%_2_DY), R3052 (0.5%_2_DY), R3053 (0.5%_2_DY), R3054 (0.5%_2_DY), R3055 (0.5%_2_DY), R3056 (0.5%_2_DY), R3057 (0.5%_2_DY), R3058 (0.5%_2_DY), R3059 (0.5%_2_DY), R3060 (0.5%_2_DY), R3061 (0.5%_2_DY), R3062 (0.5%_2_DY), R3063 (0.5%_2_DY), R3064 (0.5%_2_DY), R3065 (0.5%_2_DY), R3066 (0.5%_2_DY), R3067 (0.5%_2_DY), R3068 (0.5%_2_DY), R3069 (0.5%_2_DY), R3070 (0.5%_2_DY), R3071 (0.5%_2_DY), R3072 (0.5%_2_DY), R3073 (0.5%_2_DY), R3074 (0.5%_2_DY), R3075 (0.5%_2_DY), R3076 (0.5%_2_DY), R3077 (0.5%_2_DY), R3078 (0.5%_2_DY), R3079 (0.5%_2_DY), R3080 (0.5%_2_DY), R3081 (0.5%_2_DY), R3082 (0.5%_2_DY), R3083 (0.5%_2_DY), R3084 (0.5%_2_DY), R3085 (0.5%_2_DY), R3086 (0.5%_2_DY), R3087 (0.5%_2_DY), R3088 (0.5%_2_DY), R3089 (0.5%_2_DY), R3090 (0.5%_2_DY), R3091 (0.5%_2_DY), R3092 (0.5%_2_DY), R3093 (0.5%_2_DY), R3094 (0.5%_2_DY), R3095 (0.5%_2_DY), R3096 (0.5%_2_DY), R3097 (0.5%_2_DY), R3098 (0.5%_2_DY), R3099 (0.5%_2_DY), R3100 (0.5%_2_DY), R3101 (0.5%_2_DY), R3102 (0.5%_2_DY), R3103 (0.5%_2_DY), R3104 (0.5%_2_DY), R3105 (0.5%_2_DY), R3106 (0.5%_2_DY), R3107 (0.5%_2_DY), R3108 (0.5%_2_DY), R3109 (0.5%_2_DY), R3110 (0.5%_2_DY), R3111 (0.5%_2_DY), R3112 (0.5%_2_DY), R3113 (0.5%_2_DY), R3114 (0.5%_2_DY), R3115 (0.5%_2_DY), R3116 (0.5%_2_DY), R3117 (0.5%_2_DY), R3118 (0.5%_2_DY), R3119 (0.5%_2_DY), R3120 (0.5%_2_DY), R3121 (0.5%_2_DY), R3122 (0.5%_2_DY), R3123 (0.5%_2_DY), R3124 (0.5%_2_DY), R3125 (0.5%_2_DY), R3126 (0.5%_2_DY), R3127 (0.5%_2_DY), R3128 (0.5%_2_DY), R3129 (0.5%_2_DY), R3130 (0.5%_2_DY), R3131 (0.5%_2_DY), R3132 (0.5%_2_DY), R3133 (0.5%_2_DY), R3134 (0.5%_2_DY), R3135 (0.5%_2_DY), R3136 (0.5%_2_DY), R3137 (0.5%_2_DY), R3138 (0.5%_2_DY), R3139 (0.5%_2_DY), R3140 (0.5%_2_DY), R3141 (0.5%_2_DY), R3142 (0.5%_2_DY), R3143 (0.5%_2_DY), R3144 (0.5%_2_DY), R3145 (0.5%_2_DY), R3146 (0.5%_2_DY), R3147 (0.5%_2_DY), R3148 (0.5%_2_DY), R3149 (0.5%_2_DY), R3150 (0.5%_2_DY), R3151 (0.5%_2_DY), R3152 (0.5%_2_DY), R3153 (0.5%_2_DY), R3154 (0.5%_2_DY), R3155 (0.5%_2_DY), R3156 (0.5%_2_DY), R3157 (0.5%_2_DY), R3158 (0.5%_2_DY), R3159 (0.5%_2_DY), R3160 (0.5%_2_DY), R3161 (0.5%_2_DY), R3162 (0.5%_2_DY), R3163 (0.5%_2_DY), R3164 (0.5%_2_DY), R3165 (0.5%_2_DY), R3166 (0.5%_2_DY), R3167 (0.5%_2_DY), R3168 (0.5%_2_DY), R3169 (0.5%_2_DY), R3170 (0.5%_2_DY), R3171 (0.5%_2_DY), R3172 (0.5%_2_DY), R3173 (0.5%_2_DY), R3174 (0.5%_2_DY), R3175 (0.5%_2_DY), R3176 (0.5%_2_DY), R3177 (0.5%_2_DY), R3178 (0.5%_2_DY), R3179 (0.5%_2_DY), R3180 (0.5%_2_DY), R3181 (0.5%_2_DY), R3182 (0.5%_2_DY), R3183 (0.5%_2_DY), R3184 (0.5%_2_DY), R3185 (0.5%_2_DY), R3186 (0.5%_2_DY), R3187 (0.5%_2_DY), R3188 (0.5%_2_DY), R3189 (0.5%_2_DY), R3190 (0.5%_2_DY), R3191 (0.5%_2_DY), R3192 (0.5%_2_DY), R3193 (0.5%_2_DY), R3194 (0.5%_2_DY), R3195 (0.5%_2_DY), R3196 (0.5%_2_DY), R3197 (0.5%_2_DY), R3198 (0.5%_2_DY), R3199 (0.5%_2_DY), R3200 (0.5%_2_DY), R3201 (0.5%_2_DY), R3202 (0.5%_2_DY), R3203 (0.5%_2_DY), R3204 (0.5%_2_DY), R3205 (0.5%_2_DY), R3206 (0.5%_2_DY), R3207 (0.5%_2_DY), R3208 (0.5%_2_DY), R3209 (0.5%_2_DY), R3210 (0.5%_2_DY), R3211 (0.5%_2_DY), R3212 (0.5%_2_DY), R3213 (0.5%_2_DY), R3214 (0.5%_2_DY), R3215 (0.5%_2_DY), R3216 (0.5%_2_DY), R3217 (0.5%_2_DY), R3218 (0.5%_2_DY), R3219 (0.5%_2_DY), R3220 (0.5%_2_DY), R3221 (0.5%_2_DY), R3222 (0.5%_2_DY), R3223 (0.5%_2_DY), R3224 (0.5%_2_DY), R3225 (0.5%_2_DY), R3226 (0.5%_2_DY), R3227 (0.5%_2_DY), R3228 (0.5%_2_DY), R3229 (0.5%_2_DY), R3230 (0.5%_2_DY), R3231 (0.5%_2_DY), R3232 (0.5%_2_DY), R3233 (0.5%_2_DY), R3234 (0.5%_2_DY), R3235 (0.5%_2_DY), R3236 (0.5%_2_D

INVENTEC

TITLE			
MODEL,PROJECT,FUNCTION			
LVDS			
SIZE	CODE	DOC NUMBER	REV
C	CS	1310xxxxx-0-0	X01
SHEET 37 of 58			

HDMI

Location 3150 ~ 3199
Ver.02_20120809



Location	Part number	Factory	Manufacturer Part No	Marking
D300	1ST : 6011A0026801	DIODES	D-BAT54-7	KL1
	2nd : 60110GA0367T	NXP	BAT54	
Q300	1ST : 6015B0124601	NXP	2N7002P	LWx
Q301	2nd : 6015B0140901	DIODES	DMN65D8L-7	MM6
U301	1ST : 6019B0932401	MXIC	MX25L512EMI-10G	
512KB	2nd : 6019B0816001	ATMEL	AT25F512B-SSH-T	
U301	1ST : 6019B1016101	WINBOND	W25Q32FVSSIG	
4MB	2nd : 6019B0794701	MXIC	MX25L3206EM2I-12G	

INVENTEC

TITLE
MODEL, PROJECT, FUNCTION

DOC NUMBER
1310xxxxx-0-0

REV
X01

SIZE
A3

SHEET 38 of 58

CHANGE by XXX DATE 21-OCT-2002

SATA HDD

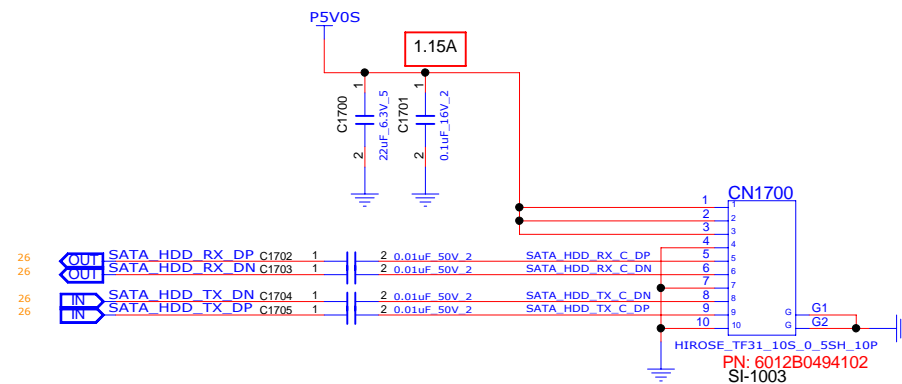
Location 1700 ~ 1749

mSATA

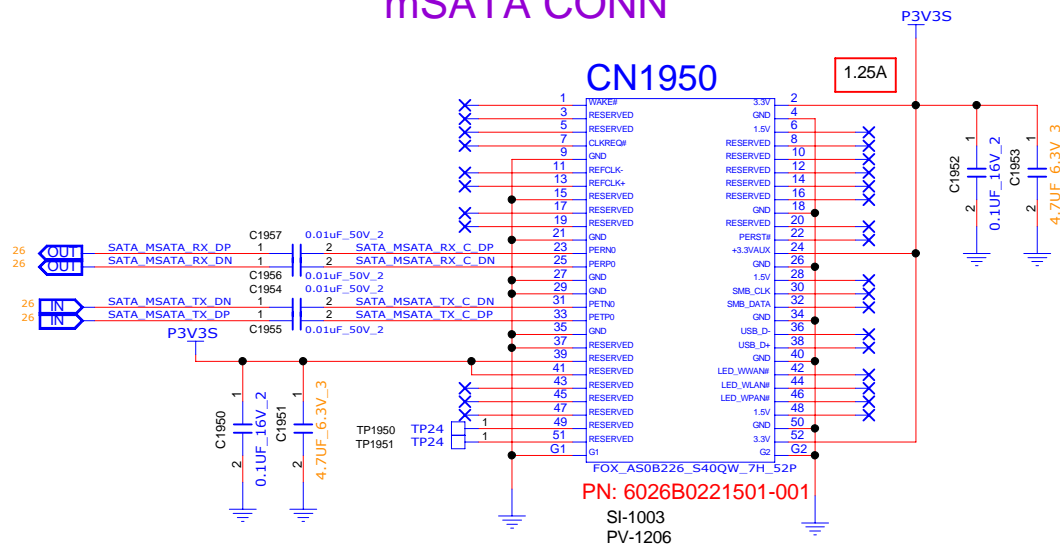
Location 1950 ~ 1999

Ver.01_20120808

SATA HDD CABLE CONN on MB



mSATA CONN



INVENTEC

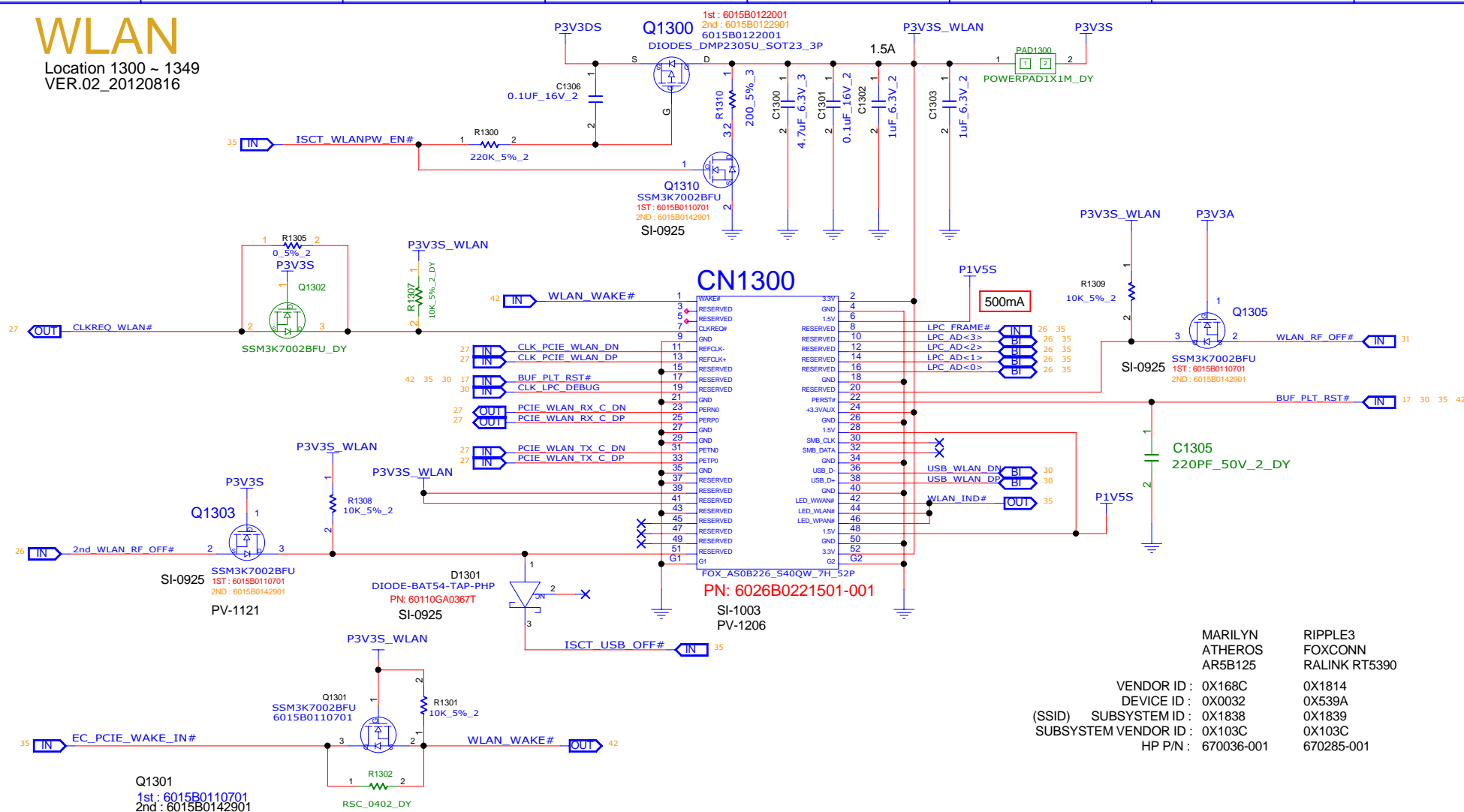
TITLE			
MODEL,PROJECT,FUNCTION			
SATA HDD & SATA ODD			
SIZE	CODE	DOC NUMBER	REV
A3	CS	1310xxxxx-0-0	X01

CHANGE by XXX DATE 21-OCT-2002

SHEET 39 of 58



WLAN

Location 1300 ~ 1349
VER.02_20120816

MARILYN
ATHEROS
AR5B125
VENDOR ID : 0X168C
DEVICE ID : 0X0032
(SSID) SUBSYSTEM ID : 0X1838
SUBSYSTEM VENDOR ID : 0X103C
HP P/N : 670036-001

RIPLLE3
FOXCONN
RALINK RT5390
0X1814
0X539A
0X1839
0X103C
670285-001

Location	Part number	Factory	Manufacturer Part No	Marking
D1300	1st : 6011A0026801	DIODES	D-BAT54-7	KL1
	2nd : 60110GA0367T	NXP	BAT54	
Q1301	1st : 6015B0110701	TOSHIBA	SSM3K7002BFU	NM
	2nd : 6015B0142901	DIODES	DMN65D8LW-7	MM3
Q1300	1st : 6015B0122001	DIODES	DMP2305U	23P
	2nd : 6015B0122901	TOSHIBA	SSM3J327R	KFG

INVENTEC

TITLE			
MODEL, PROJECT, FUNCTION			
WLAN & BT			
SIZE	CODE	DOC NUMBER	REV
A3	CS	1310xxxxx-0-0	X01

CHANGE by XXX DATE 21-OCT-2002

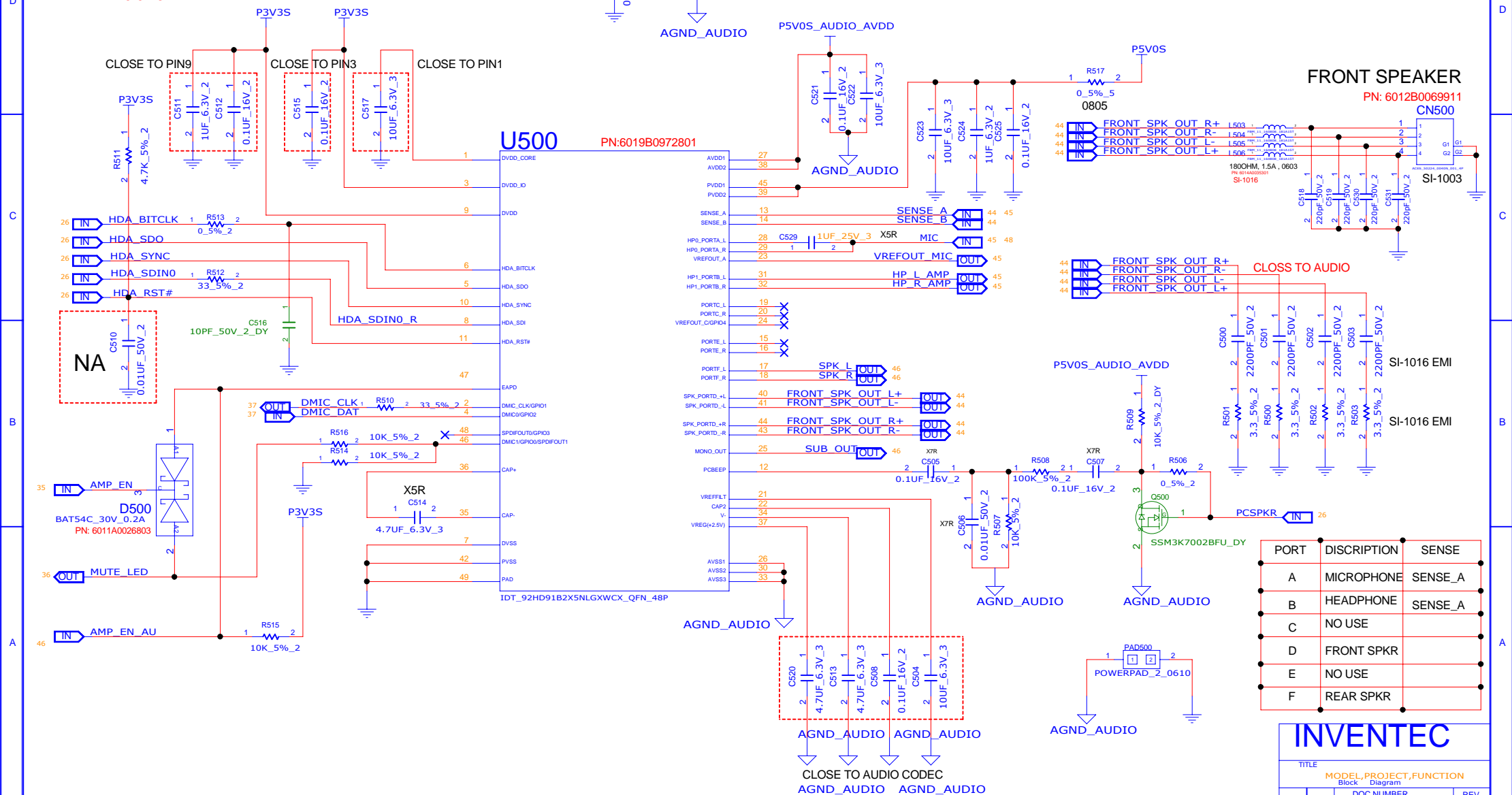
SHEET 42 of 58

AUDIO-1

CODEC

LOCATION: 500~549
VER.09_20120829

DVDD	0.025AMP
AVDD	0.06AMP
PVDD	0.01.3AMP



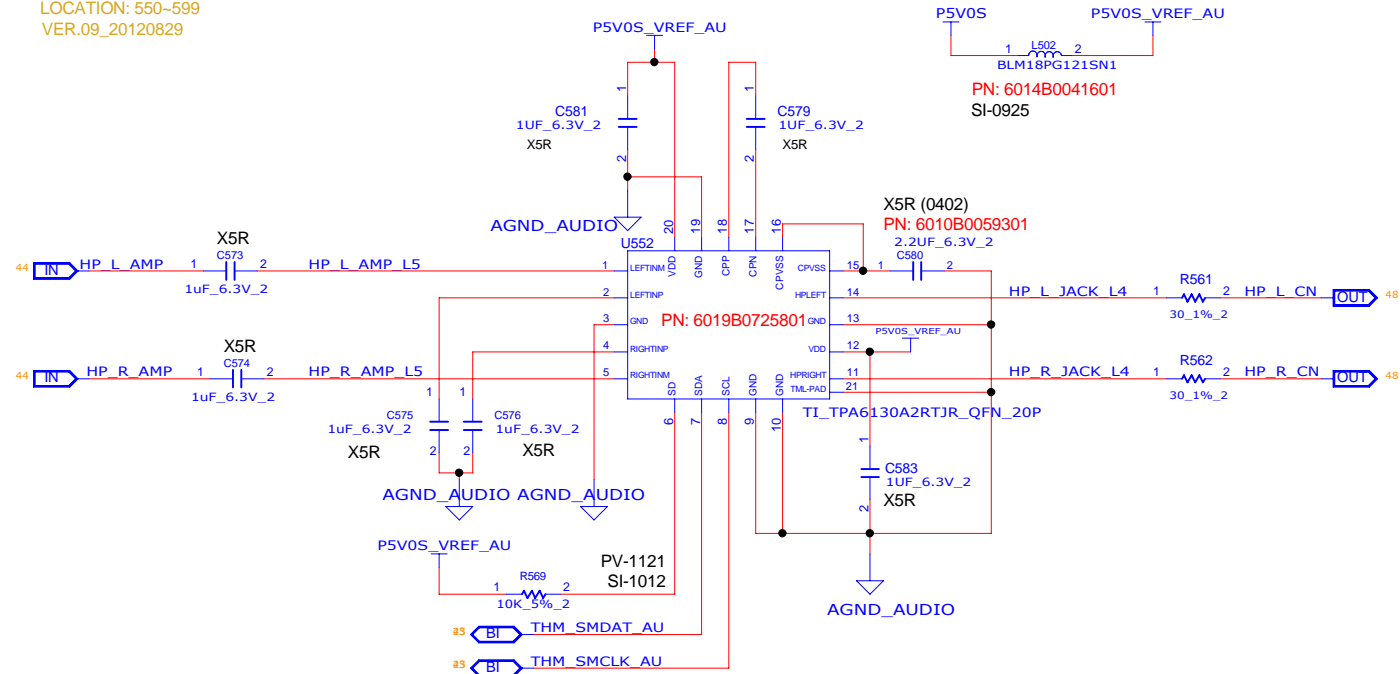
PORT	DISCRPTION	SENSE
A	MICROPHONE	SENSE_A
B	HEADPHONE	SENSE_A
C	NO USE	
D	FRONT SPKR	
E	NO USE	
F	REAR SPKR	

INVENTEC

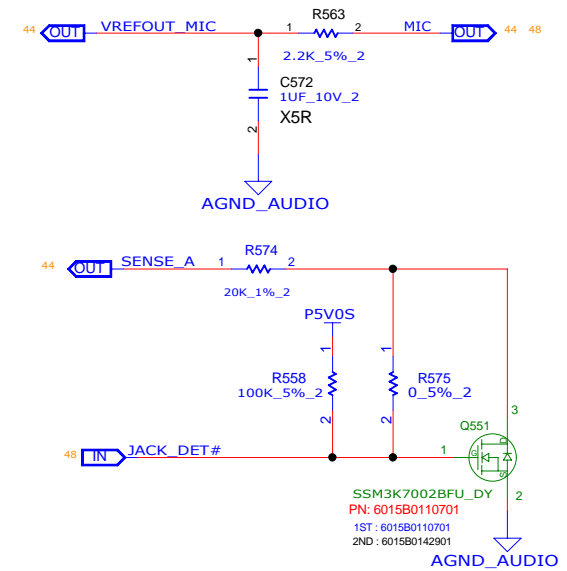
TITLE			
MODEL,PROJECT,FUNCTION Block Diagram			
SIZE A3	CODE CS	DOC.NUMBER 1310xxxxx-0-0	REV X01

AUDIO (AMP) 550-599

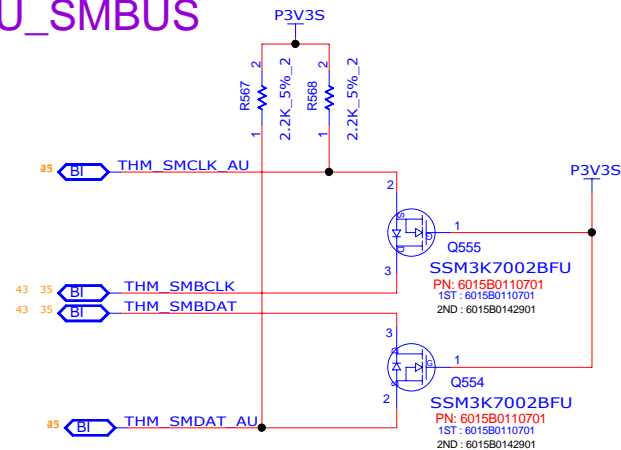
AUDIO-2 CODEC

LOCATION: 550-599
VER.09_20120829

COMBO JACK



AU_SMBUS



Location	Part number	Factory	Manufacturer Part No	Marking
Q9401	1st : 6015B0122001	DIODES	DMP2305U	23P
	2nd : 6015B0122901	TOSHIBA	SSM3J327R	KFG
L9401	1st : 6014B0200401	TAI-TECH	SWF2520CF-2R2M-R15	
	2nd : 6014B0190301	CYNTEC	PHI25201B-2R2MS	
X9401	1st : 6018B0060301	EPSON	FA-238G	2500M
	2nd : 6018B0054701	TXC	7V25000014	T250

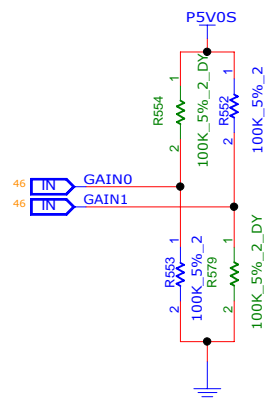
INVENTEC

TITLE			
MODEL,PROJECT,FUNCTION			
SIZE	CODE	DOC NUMBER	REV
A3	CS	1310xxxxx-0-0	X01

CHANGE by: XXX DATE: 21-OCT-2002

SHEET 45 of 58

VER.09 20120829



REAR SPK OUT

REAR SPK OUT

REAR SPK OUT

REAR SPK OUT

CN551

1 B R+

2 B R-

3 B L-

4 B L+

ACES_50224_0040N_001_4P

PN: 6012B0069911

SI-1003

C590 220PF 50V_2

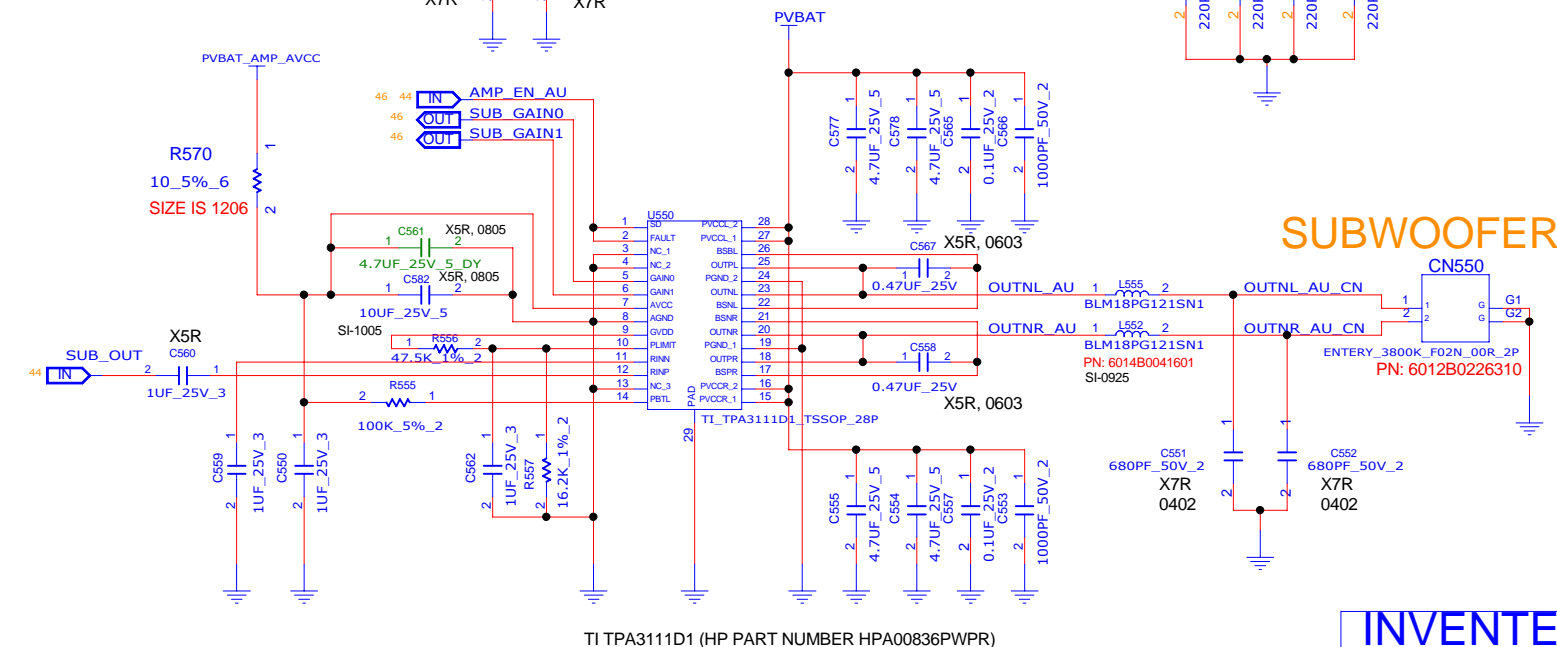
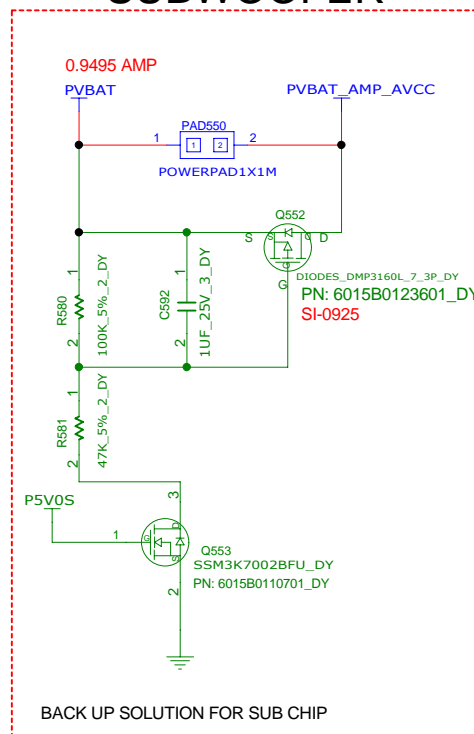
C589 220PF 50V_2

C588 220PF 50V_2

C587 220PF 50V_2

G1 220PF 50V_2

G2 220PF 50V_2

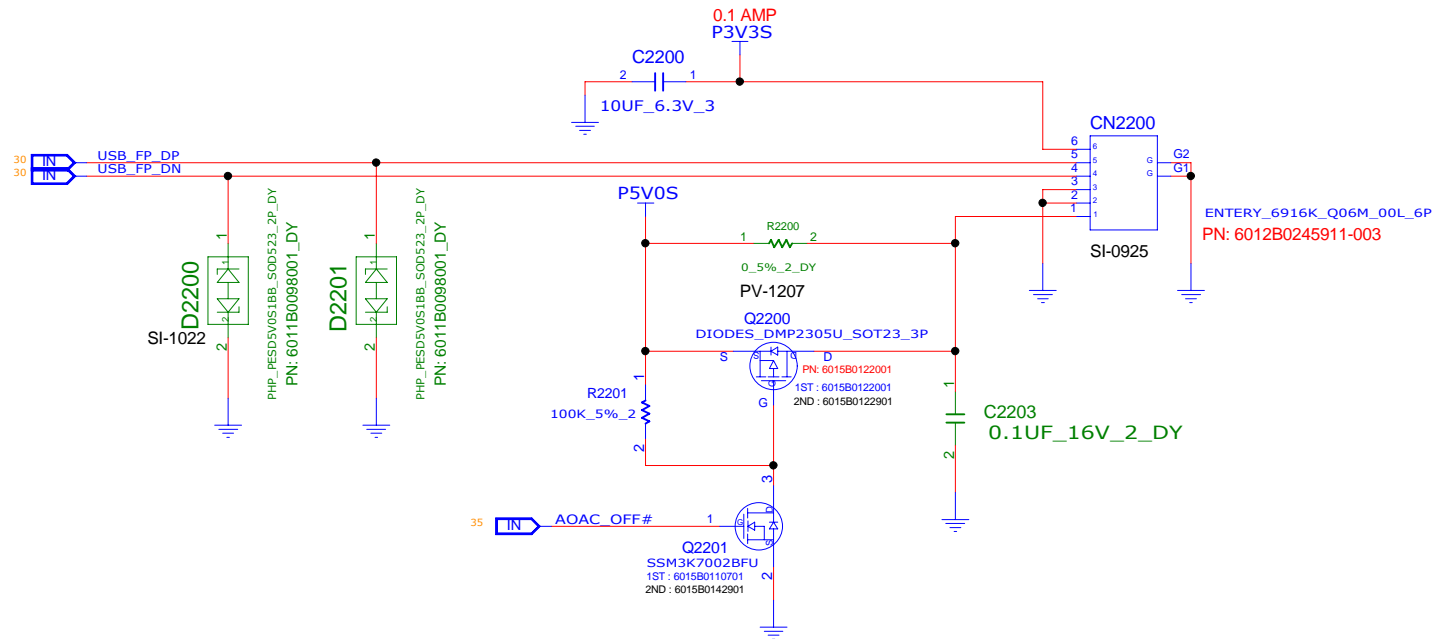


TI TPA3111D1 (HP PART NUMBER HPA00836PWPR)

INVENTEC

TITLE		MODEL,PROJECT,FUNCTION	
		Block	Diagram
SIZE A3	CODE CS	DOC.NUMBER 1310xxxxx-0-0	
SHEET		46	of 58

FINGER PRINT



VFM5302-3192 PIN ASSIGNMENTS

Pin Number	Signal Name	Test Point
1	3.3V _{CC}	TP3
2	DP	TP1
3	DM	TP2
4	GND	TP4
5	GND	TP4
6	5V _{CC}	TP6

Figure 4 - Connector Pin-out

INVENTEC

TITLE			
MODEL, PROJECT, FUNCTION			
Block Diagram			
SIZE	CODE	DOC NUMBER	REV
A3	CS	1310xxxxx-0-0	X01

CHANGE by XXX DATE 21-OCT-2002

SHEET 47 of 58



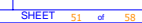
AUB
LOCATION: 9000-9999
VER.03_20120814

AUB BOARD

INVENTEC

TITLE			
MODEL,PROJECT,FUNCTION Block Diagram			
SIZE A3	CODE CS	DOC NUMBER 1310xxxxx-0-0	REV X01
SHEET 49 of 58			

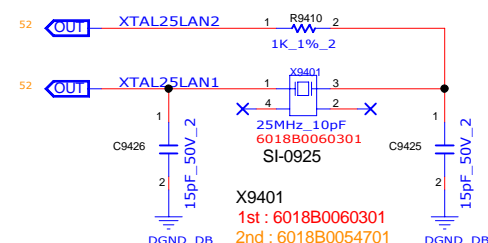




07dc0c0609023203d30196f0ad00334a

Ver.03 20120807

6019B1032001 RTL8151GSH-CG 10/100/1000



INVENTEC

TITLE	MODEL PROJECT FUNCTION
1. Project Overview	1. Project Overview
2. Project Objectives	2. Project Objectives
3. Project Scope	3. Project Scope
4. Project Organization	4. Project Organization
5. Project Schedule	5. Project Schedule
6. Project Budget	6. Project Budget
7. Project Risk Management	7. Project Risk Management
8. Project Communication	8. Project Communication
9. Project Monitoring and Control	9. Project Monitoring and Control
10. Project Closure	10. Project Closure

	DOC.NUMBER	
--	------------	--

SIZE A3	CODE CS	1310xxxxx-0-0	X
SHEET 53 of 58			

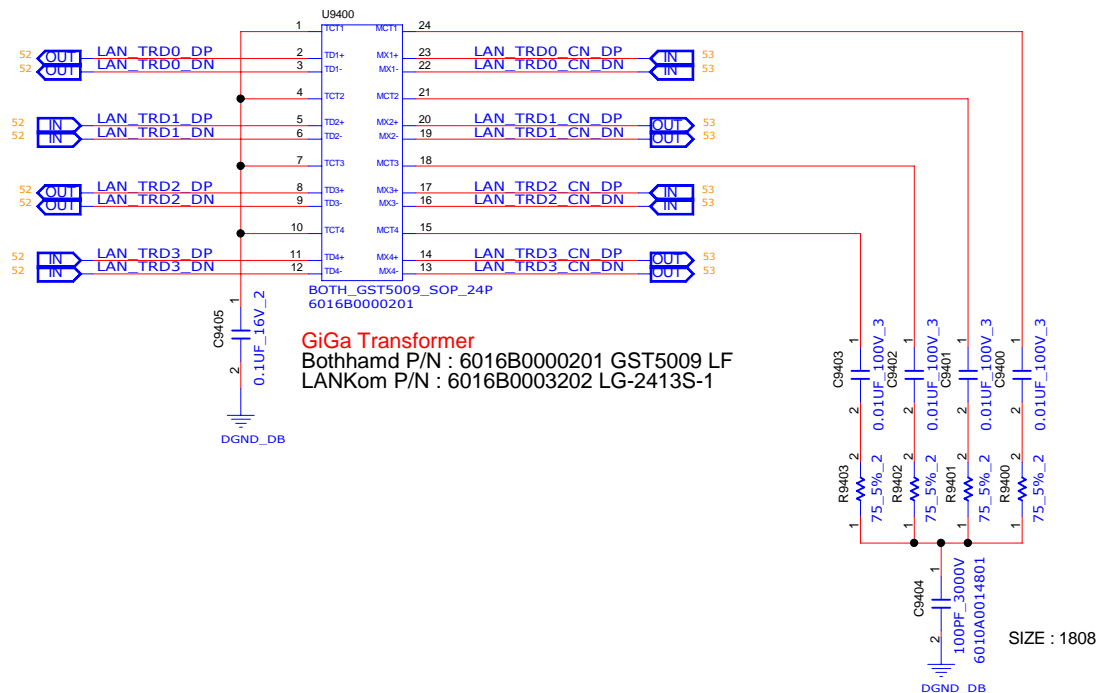
CHANGE by	XXX	DATE	21-OCT-2002
-----------	-----	------	-------------

SHEET 52 of 58

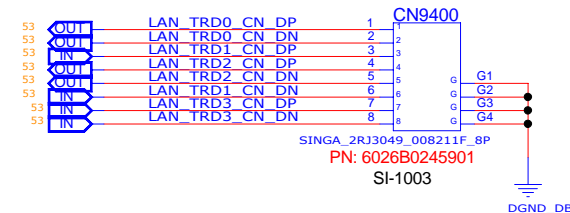
LAN (Transformer & RJ45)

Location 9400 ~ 9499

Ver.06_20120813



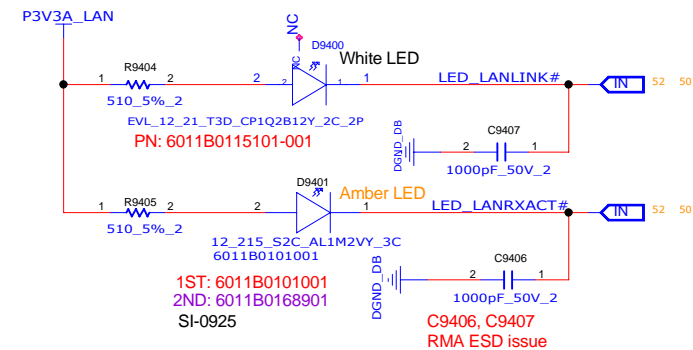
RJ-45



★Layout

D9400 White LED place on TOP side.

D9401 Amber LED place on Bottom side.



Location	Part number	Factory	Manufacturer Part No	Color
D9400	6011B0115101	EVERLIGHT	T3D_CP1Q2B12Y_2C	White
D9401	6011B0101001	EVERLIGHT	S2C_AL1M2VY_3C	Amber

Location	Part number	Factory	Manufacturer Part No	Marking
D300	1st : 6011A0026801	DIODES	D-BAT54-7	KL1
Q300	2nd : 60110GA0367T	NXP	BAT54	L4
Q301	1st : 6015B0110701	TOSHIBA	SSM3K7002BFU	NM
U301	2nd : 6015B0142901	DIODES	DMN65D8LW-7	MM3
512KB	1st : 6019B0932401	MXIC	MX25L512EML-10G	
U301	2nd : 6019B0816001	ATMEL	AT25F512B-SSH-T	
4MB	1st : 6019B1016101	WINBOND	W25Q32FVSSIG	
U301	2nd : 6019B0794701	MXIC	MX25L3206EM2I-12G	
8MB	1st : 6019B0955901	WINBOND	W25Q64FV55IG	
	2nd : 6019B0813101	MXIC	MX25L6406EM2I-12G	

INVENTEC

TITLE MODEL,PROJECT,FUNCTION

Block Diagram

DOC NUMBER 1310xxxxx-0-0

REV X01

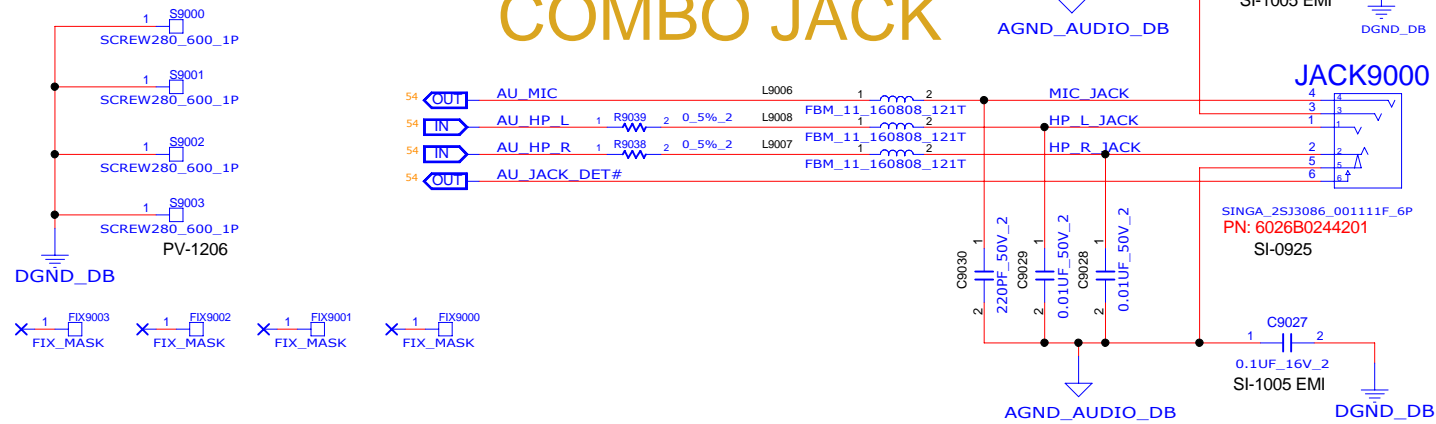
SHEET 53 of 58

CHANGE by XXX

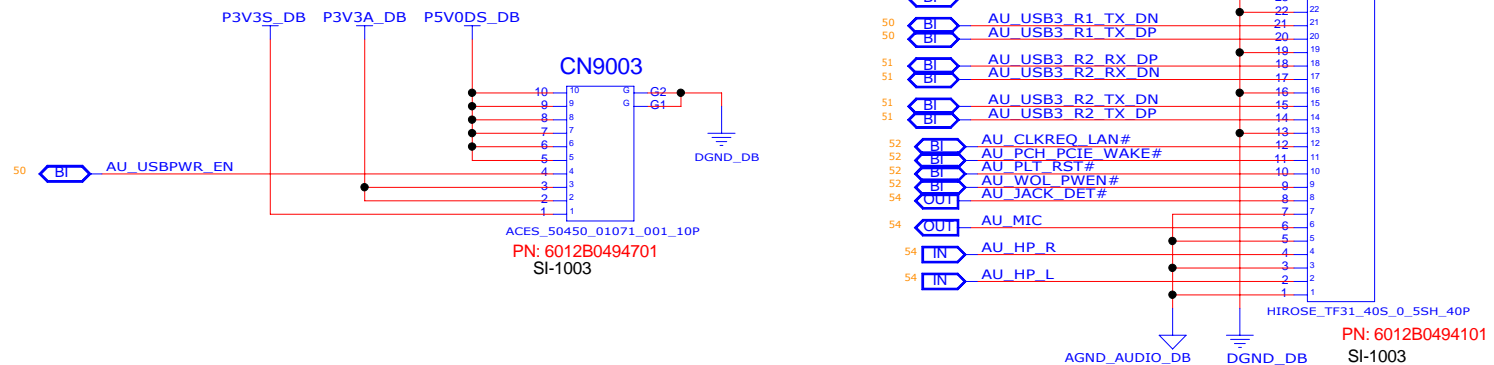
DATE 21-OCT-2002

CONNECTOR

COMBO JACK



MB TO AUB CONNECTOR

**INVENTEC**

TITLE			
MODEL,PROJECT,FUNCTION			
Block Diagram			
SIZE A3	CODE CS	DOC NUMBER 1310xxxxx-0-0	REV X01
SHEET 54 of 58			

CHANGE by XXXX DATE 21-OCT-2002

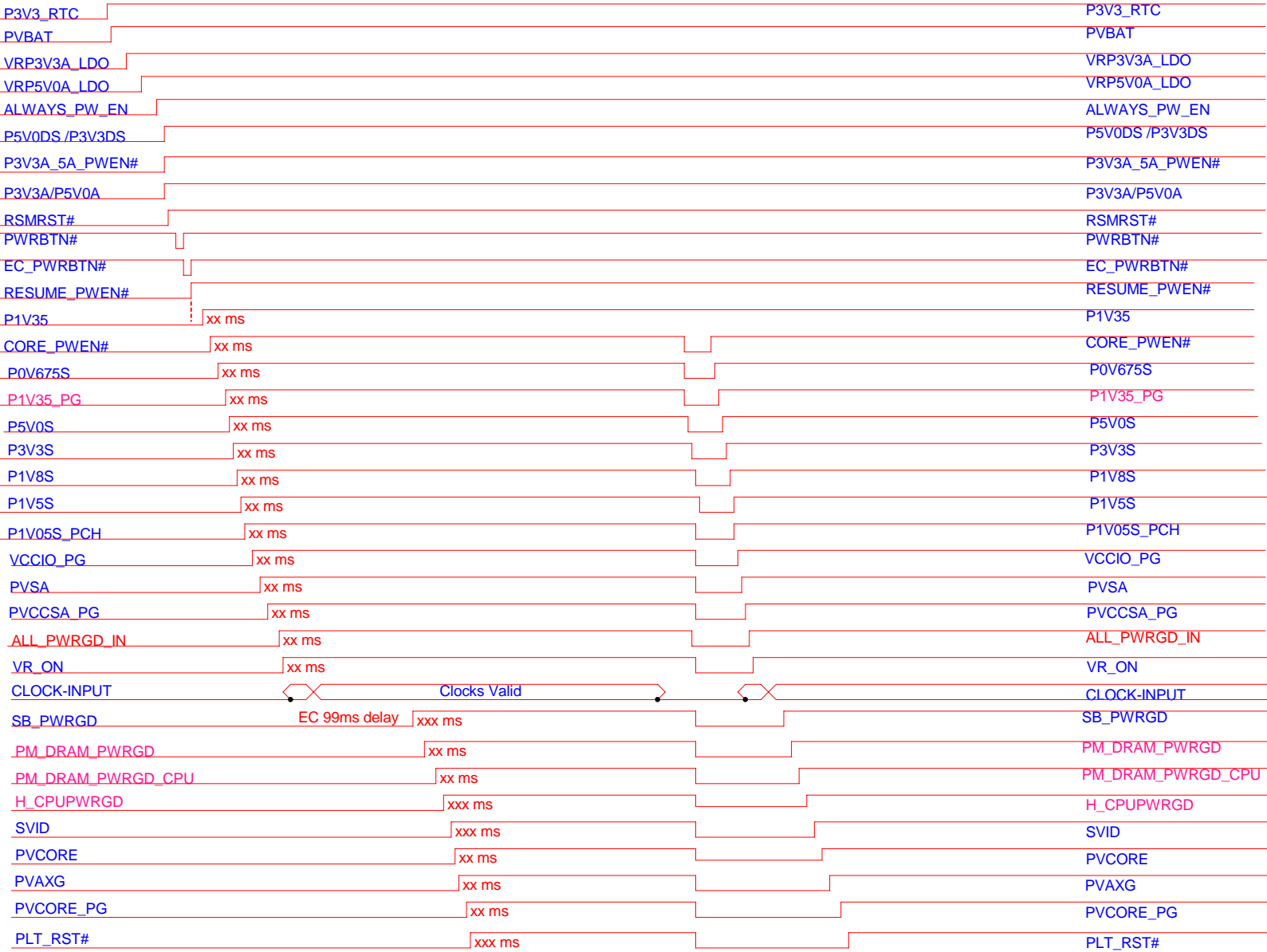
[illegible]

8	7	6	5	4	3	2	1
<div><div><div>1310A2552101 (6L) 1310A2552201 (8L)</div><div>ESD BOARD 1</div><div><p>TP7508 TP30</p><p>TP7507 TP30</p><p>D7507</p><p>PHP_PESD5V0S1BB_SOD523_2P_DY</p><p>PN: 6011B0098001-002_DY</p><p>PV-1206</p></div></div></div> <div><div><div>USB BOARD (6L) USB BOARD (8L)</div><div>POWER BOARD (6L) POWER BOARD (8L)</div><div>EMI BOARD (6L) EMI BOARD (8L)</div></div><div><div>1310A2548501 1310A2548601</div><div>1310A2548701 1310A2548801</div><div>1310A2552101 1310A2552102</div><div>1310A2552201 1310A2552202</div></div><div><div>6050A2548501 6050A2548601</div><div>6050A2548701 6050A2548801</div><div>6050A2552101 6050A2552201</div></div></div>							
<div><div><div>1310A2552102 (6L) 1310A2552202 (8L)</div><div>ESD BOARD 2</div><div><p>TP7503 TP30</p><p>TP7504 TP30</p><p>D7503</p><p>PHP_PESD5V0S1BB_SOD523_2P_DY</p><p>PN: 6011B0098001-002_DY</p><p>PV-1206</p></div></div></div> <div><div><div>CHIEF RIVER CHIEF RIVER CHIEF RIVER</div><div>DIS DIS UMA</div><div>NVIDIA N14P-GV2 (GEFORCE 630M)</div><div>4G 2G N/A</div><div>SAMSUNG K4W4G1646B-HC11</div><div>MICRON MT41K256M16HA-107G:E</div><div>N/A</div></div><div><div>1310A2548301</div><div>1310A2548302</div><div>1310A2548201</div></div></div>							
<div><div>INVENTEC</div><div><div>TITLE</div><div>MODEL,PROJECT,FUNCTION Block Diagram</div></div><div><div>SIZE A3</div><div>CODE CS</div><div>DOC NUMBER 1310xxxxx-0-0</div><div>REV X01</div></div><div>CHANGE by xxx</div><div>DATE 21-OCT-2002</div><div>SHEET 56 of 58</div></div>							
8	7	6	5	4	3	2	1

POWE UP

S5----->S0

S3

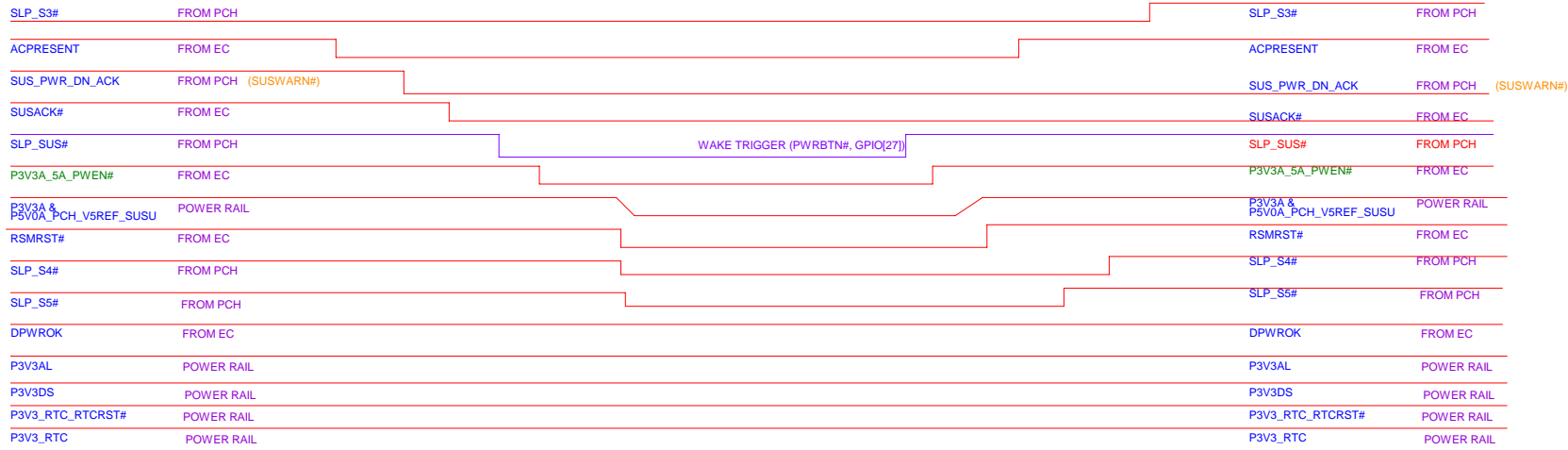


INVENTEC

Title			
MODEL,PROJECT,FUNCTION			
Block Diagram			
SIZE	CODE	DOC NUMBER	REV
C	CS	1310xxxx-0-0	X01
CHANGE BY		DATE	SHEET
xxx		21-OCT-2002	57 of 58

S3 TO DEEP S3

DEEP S3 TO S0



INVENTEC

Title			
MODEL, PROJECT, FUNCTION			
Block Diagram			
SIZE	CODE	DOC NUMBER	REV
C	CS	1310xxxxx-0-0	X01
SHEET		58	of 58